

Elderly Re-presentations to ED

Can this be prevented?

Dr Anil Paramadhathil

Director Geriatric Medicine

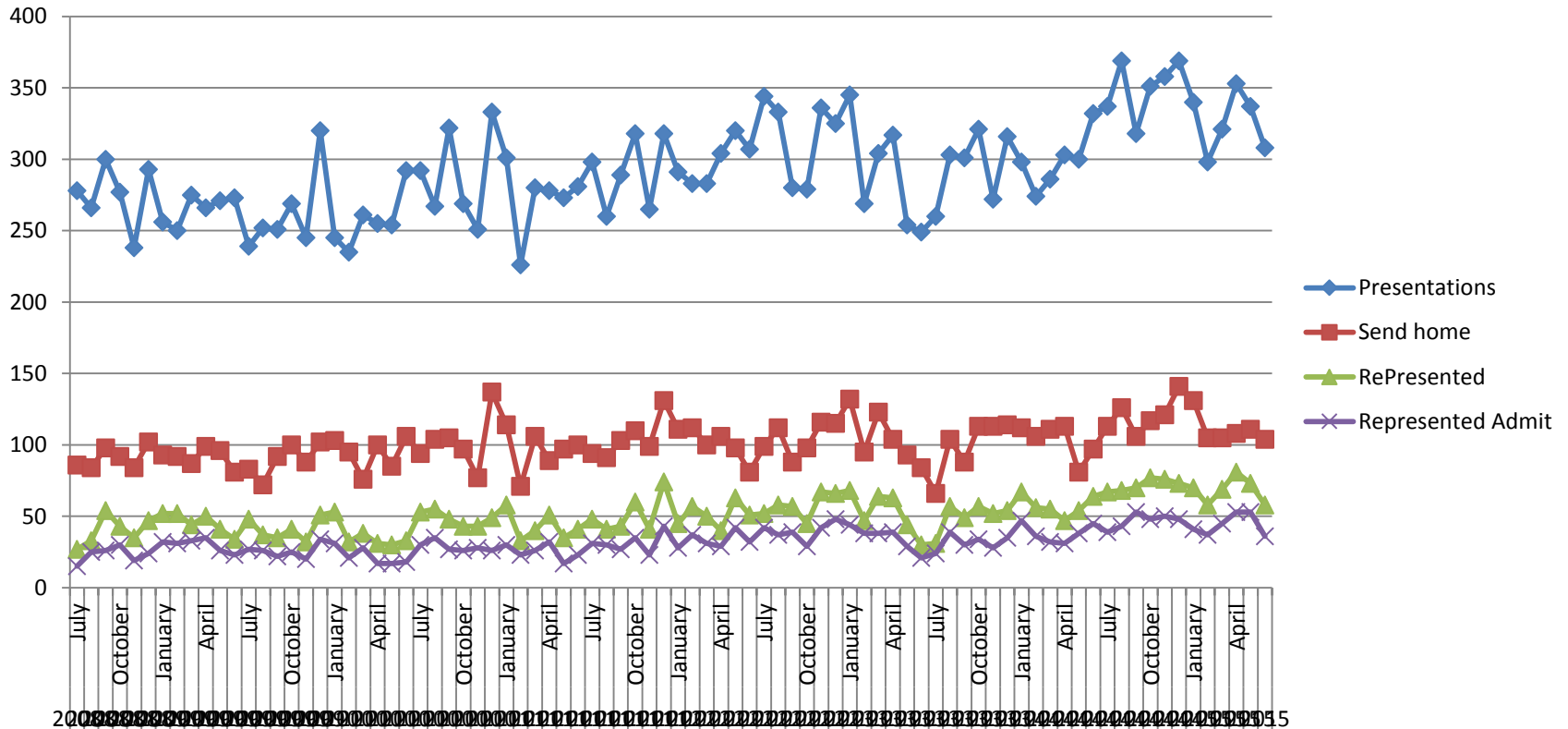
Rehabilitation, Aged and Community Care

Canberra Hospital and Health Services

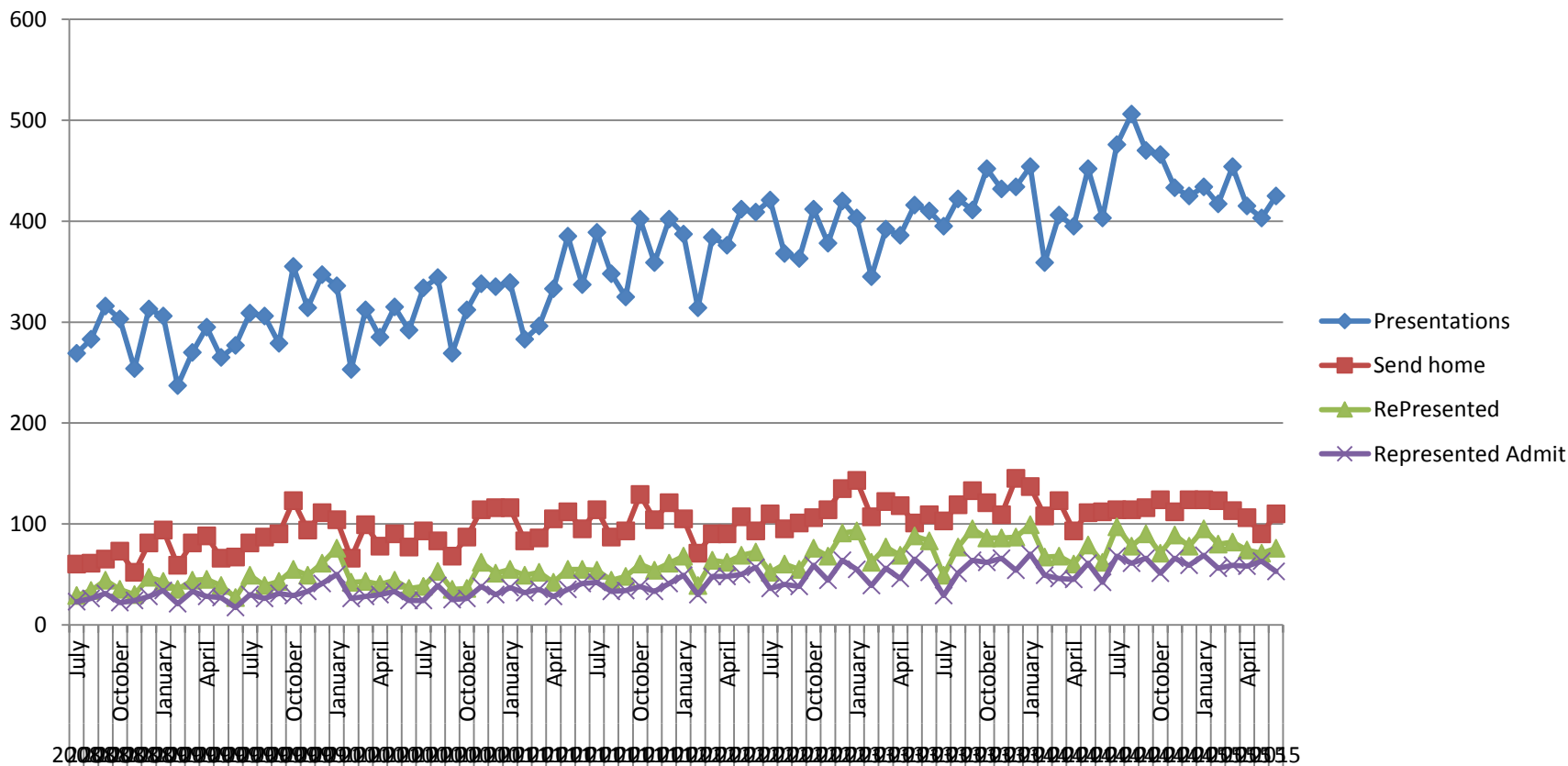
Where it all began...

- RADAR team, capacity
- Brain storming
- Data analysis

Discharge home from ED 80-84y.o July 2008 to June 2015



Discharge home from ED aged 85+ July 2008 to June 2015

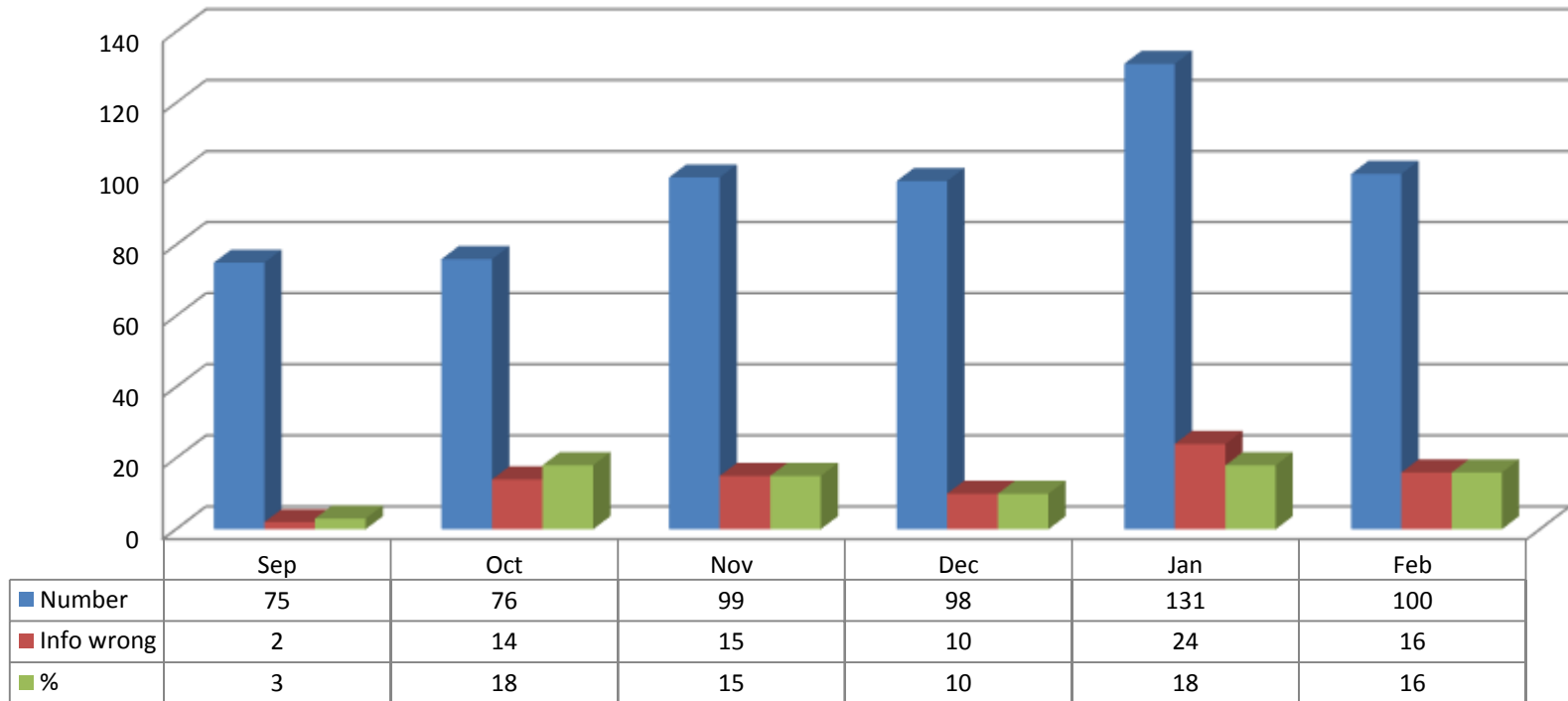


A plan takes shape...

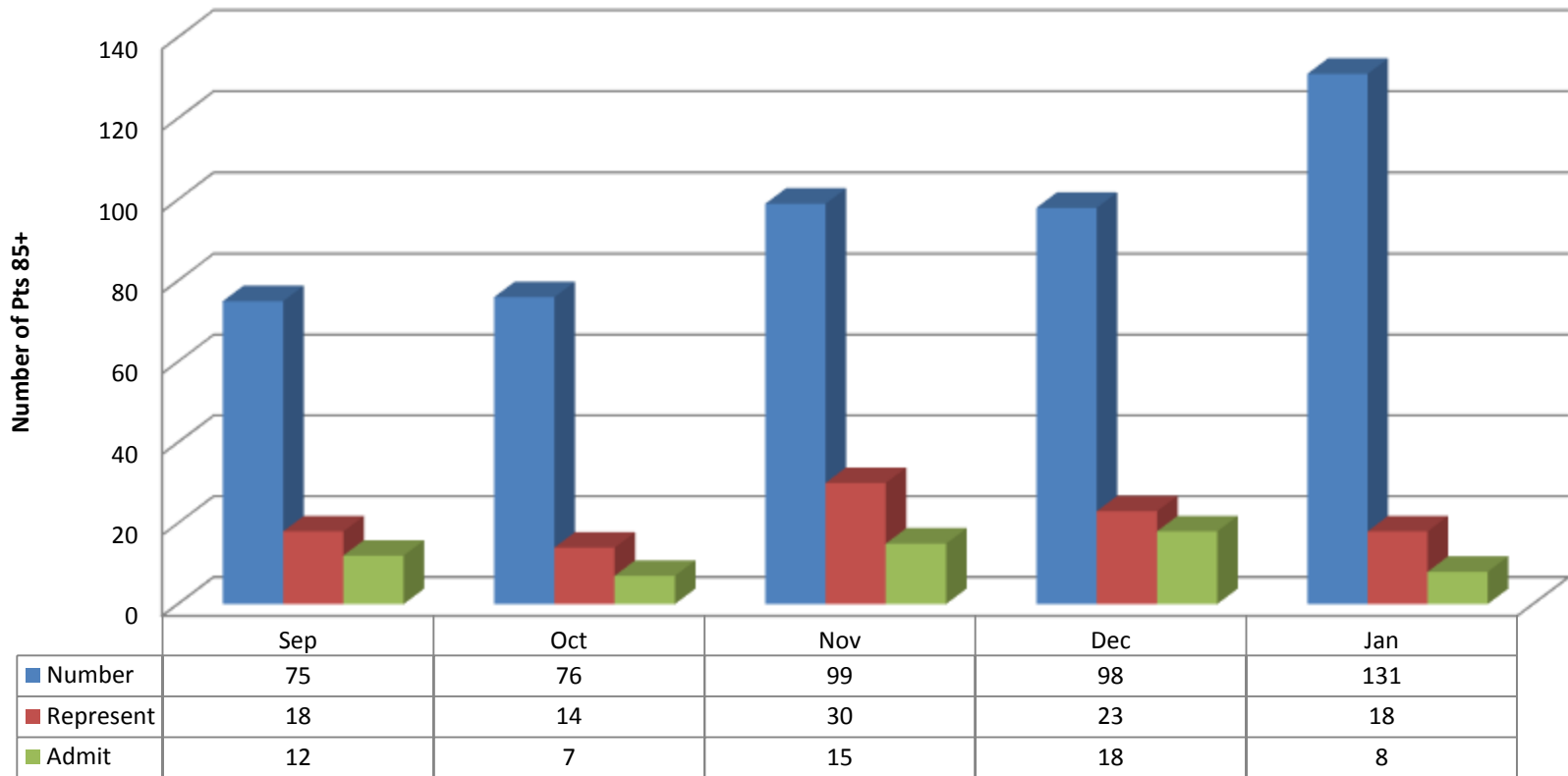
- Focus on 85+
- Discussions...
 - Within Team
 - GPLO
- Formulation of plan
 - Algorithm
 - Letters to GP
 - Collecting/ recording data
- Pre-view (85+ data)

Incorrect Info on EDIS

Wrong Info on System

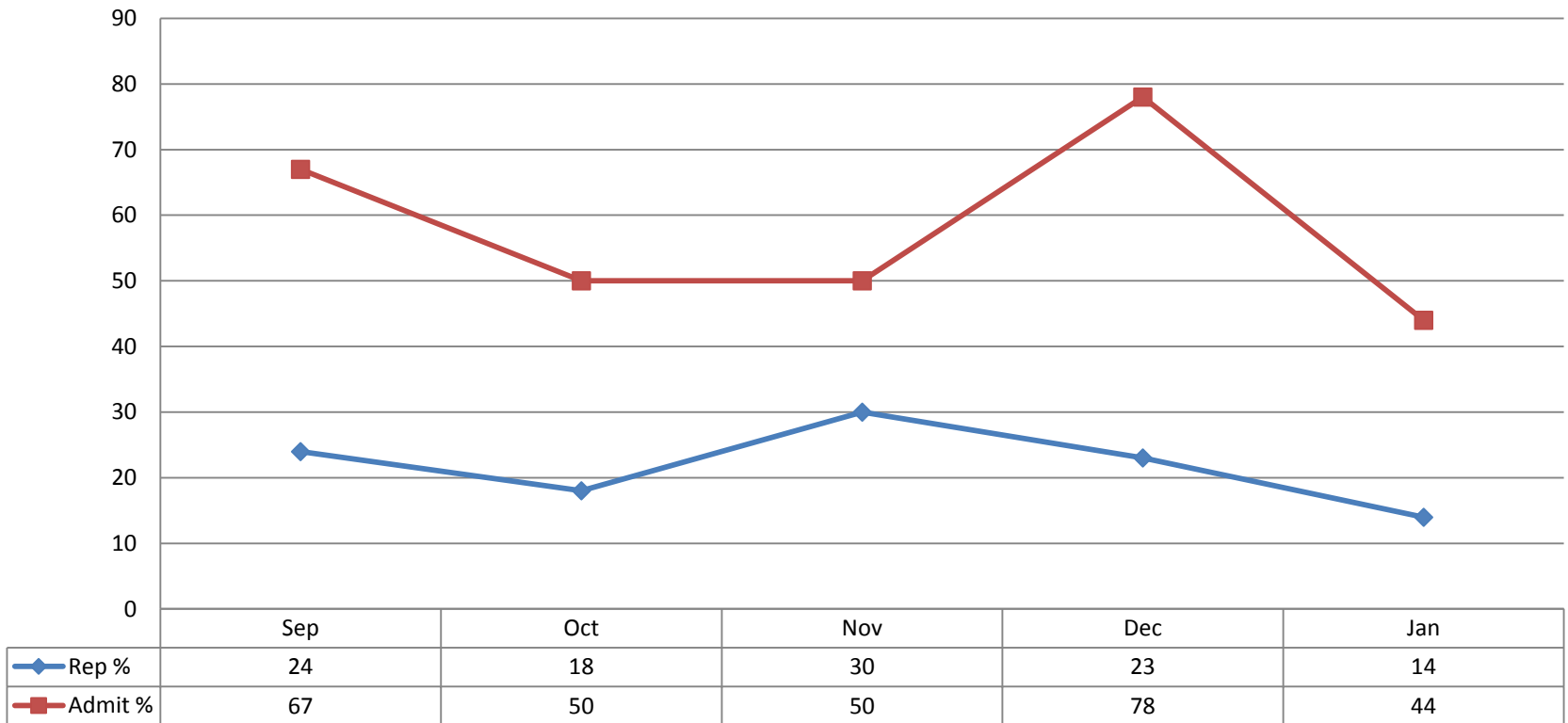


Follow up post Dc from ED (n=348)

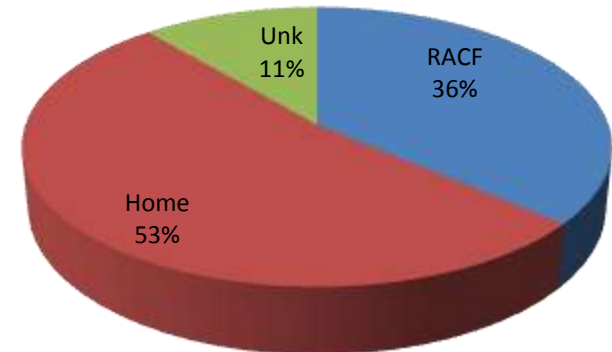
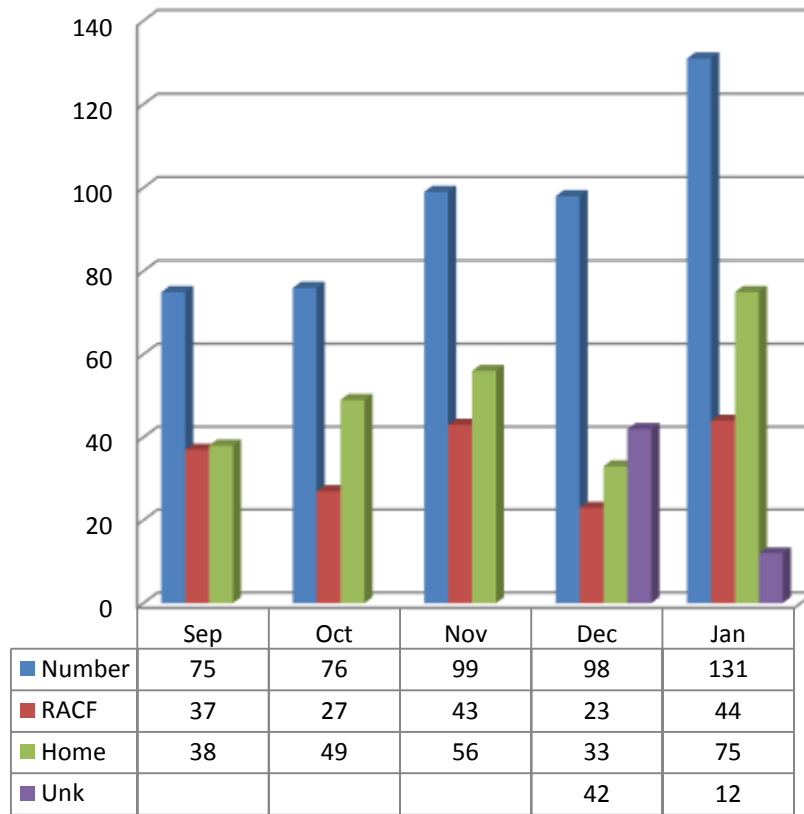


Re-presentations and admissions

Percentages

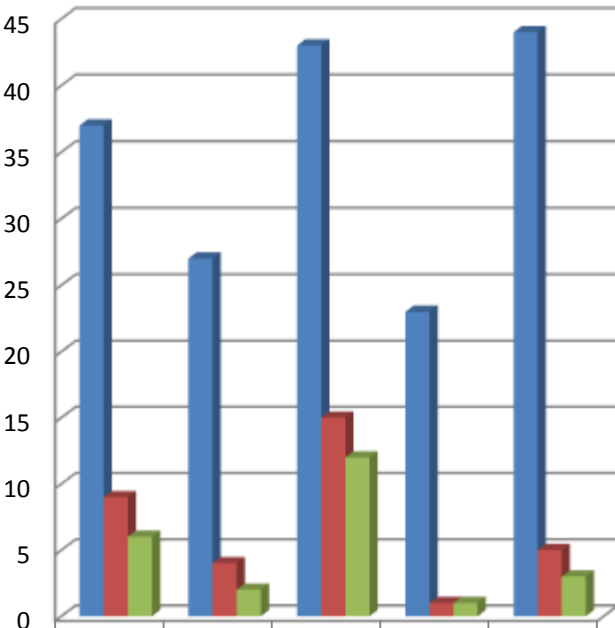


Place of Residence



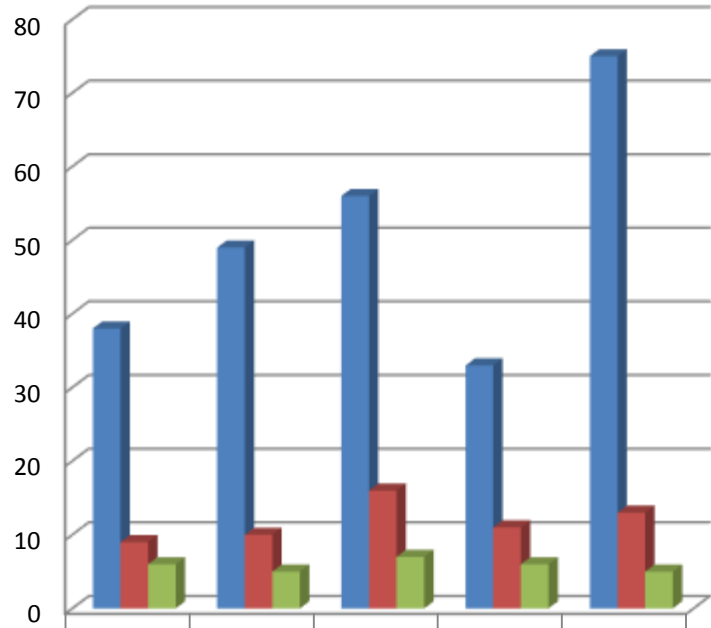
Representations and Admit

- RACF



RACF	37	27	43	23	44
RACF Rep	9	4	15	1	5
RACF Admit	6	2	12	1	3

- Home

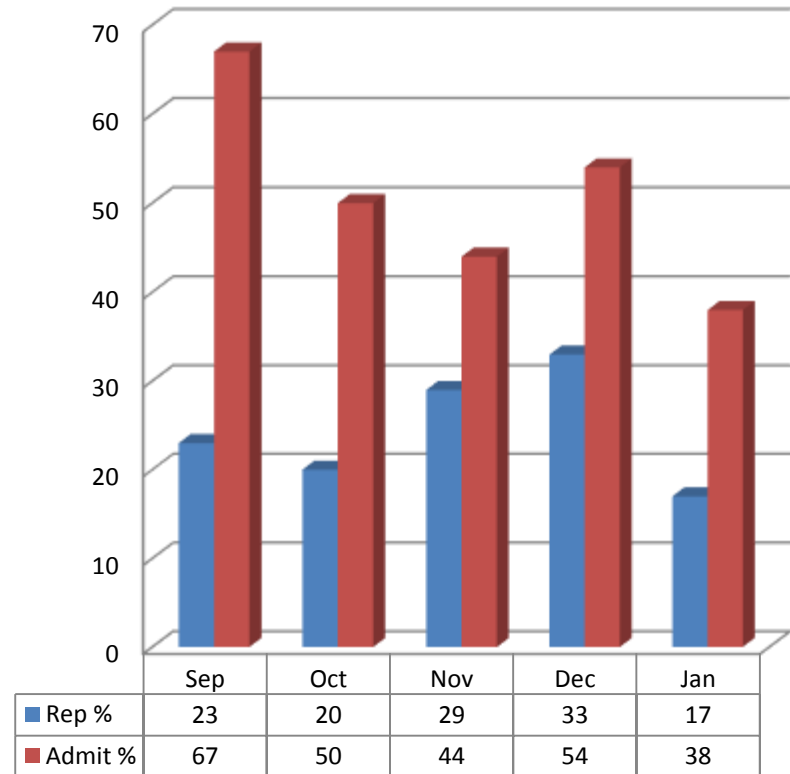
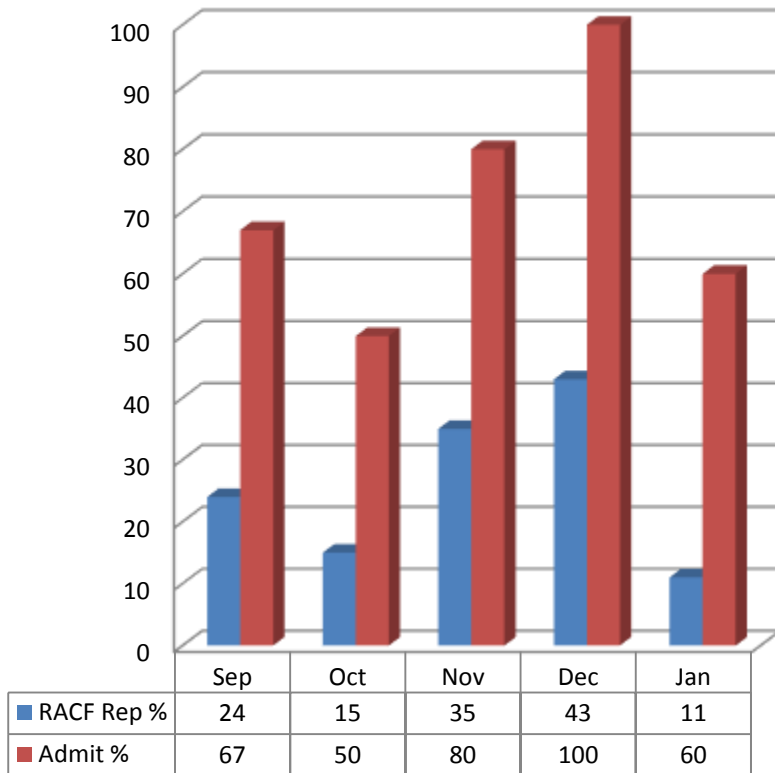


Home	38	49	56	33	75
Home Rep	9	10	16	11	13
Home Adm	6	5	7	6	5

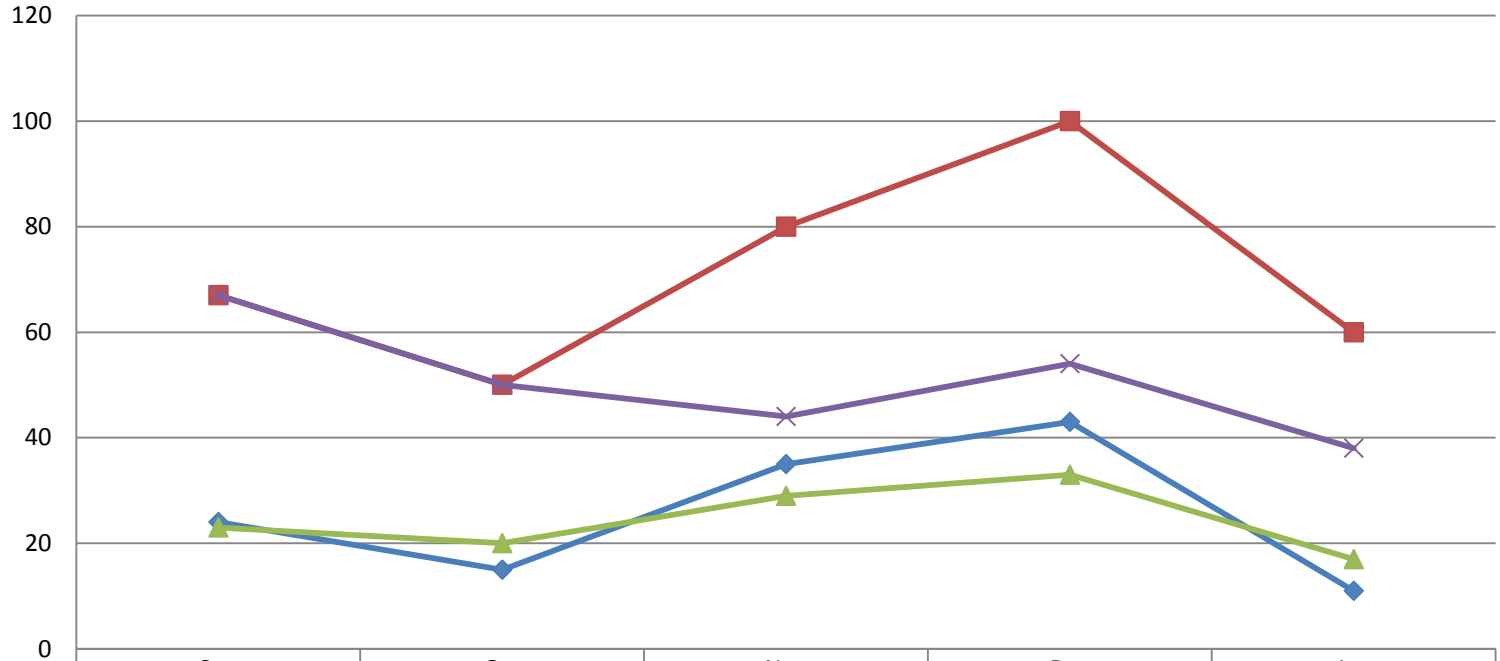
Represent and Admit - %

- RACF

- Home

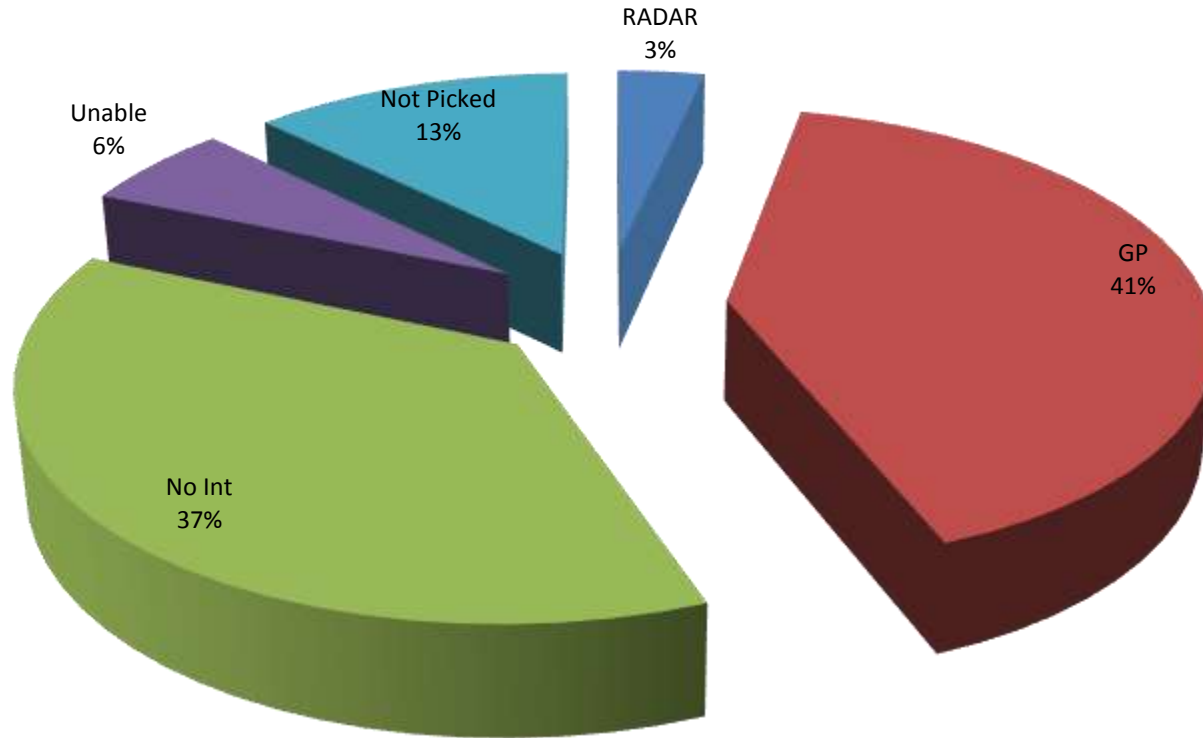


Admit % Home and RACF

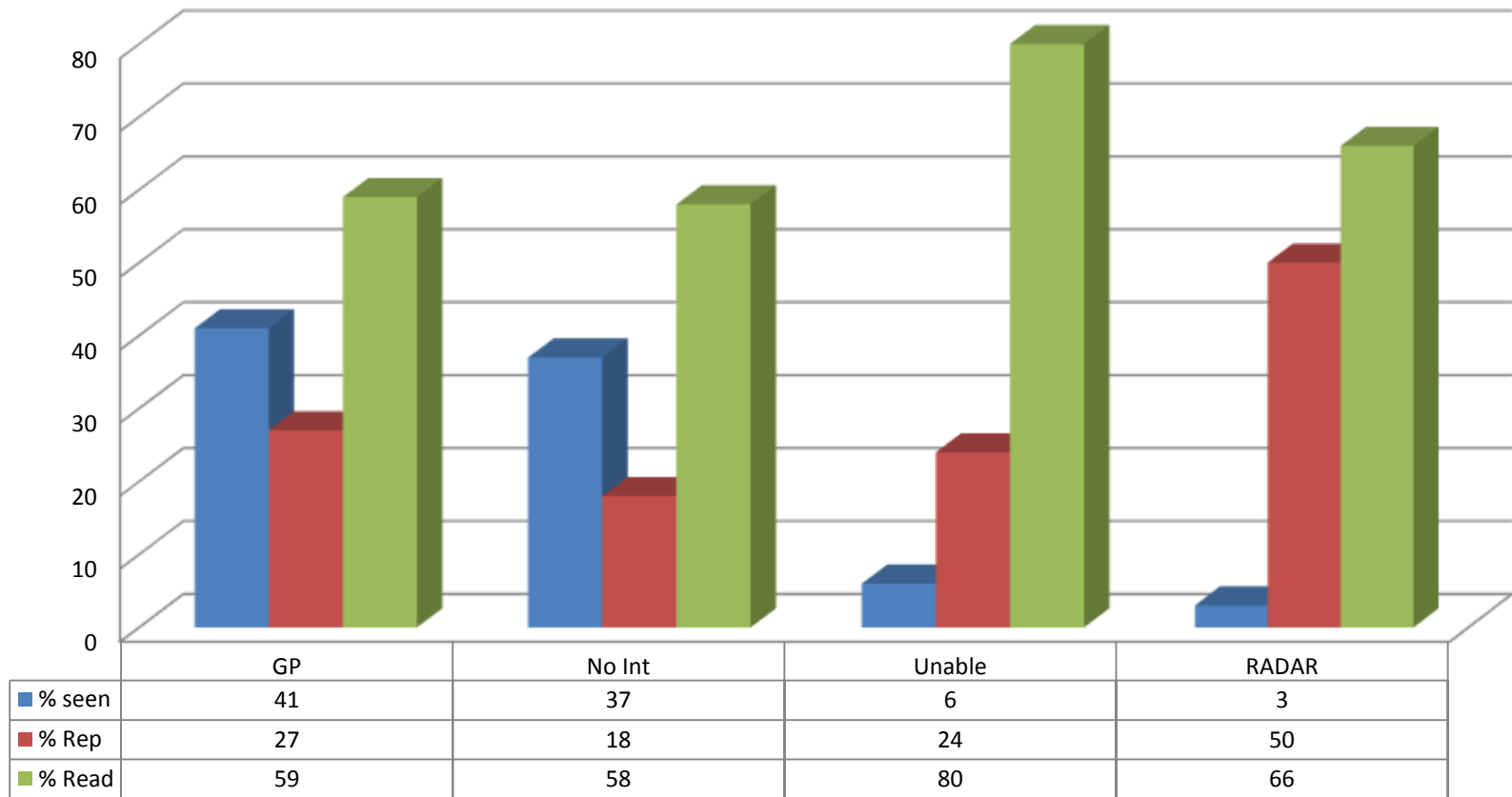


	Sep	Oct	Nov	Dec	Jan
◆ RACF Rep %	24	15	35	43	11
■ RACF Admit %	67	50	80	100	60
▲ Home Rep %	23	20	29	33	17
× Home Admit %	67	50	44	54	38

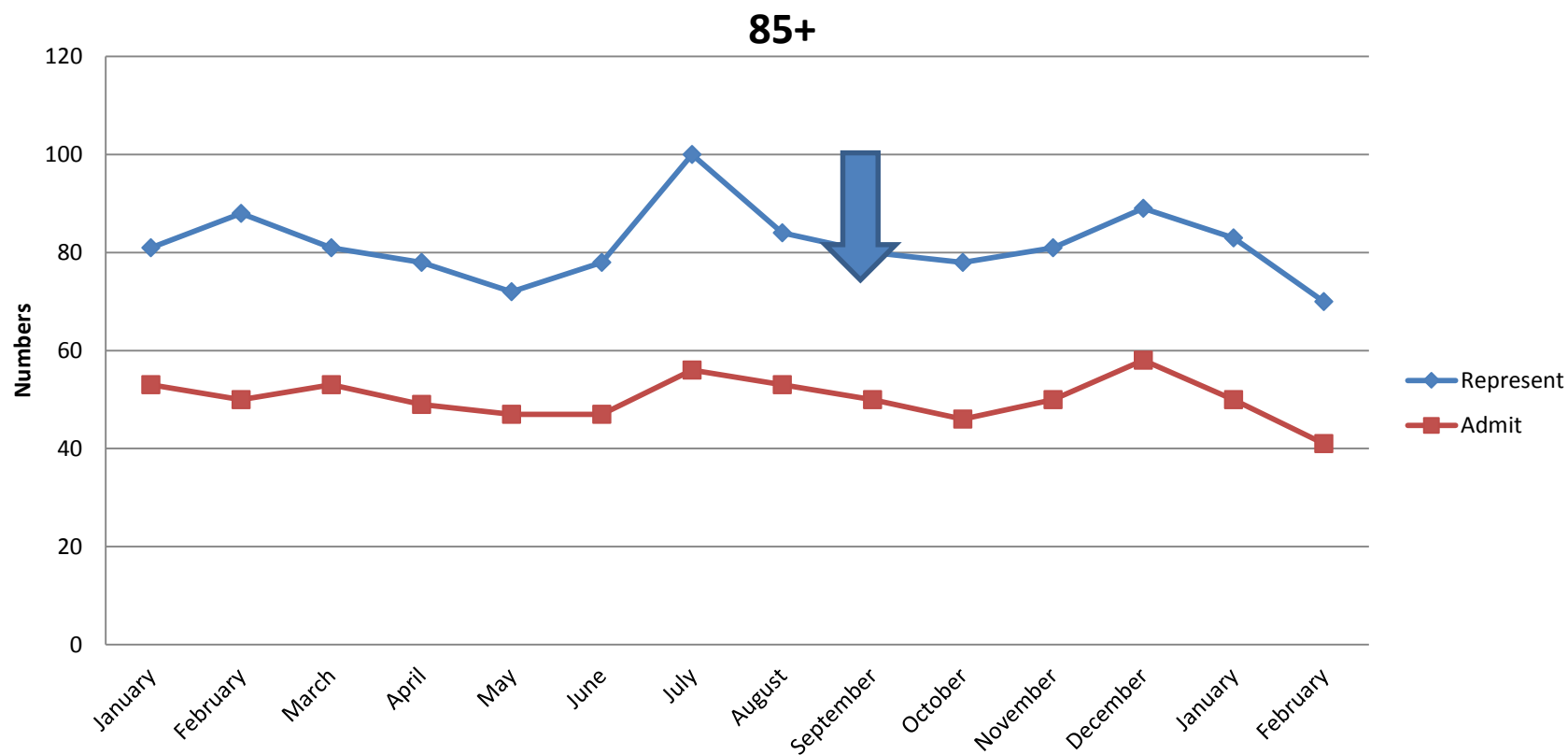
Follow-up of Patients Sep – Jan (n=348)



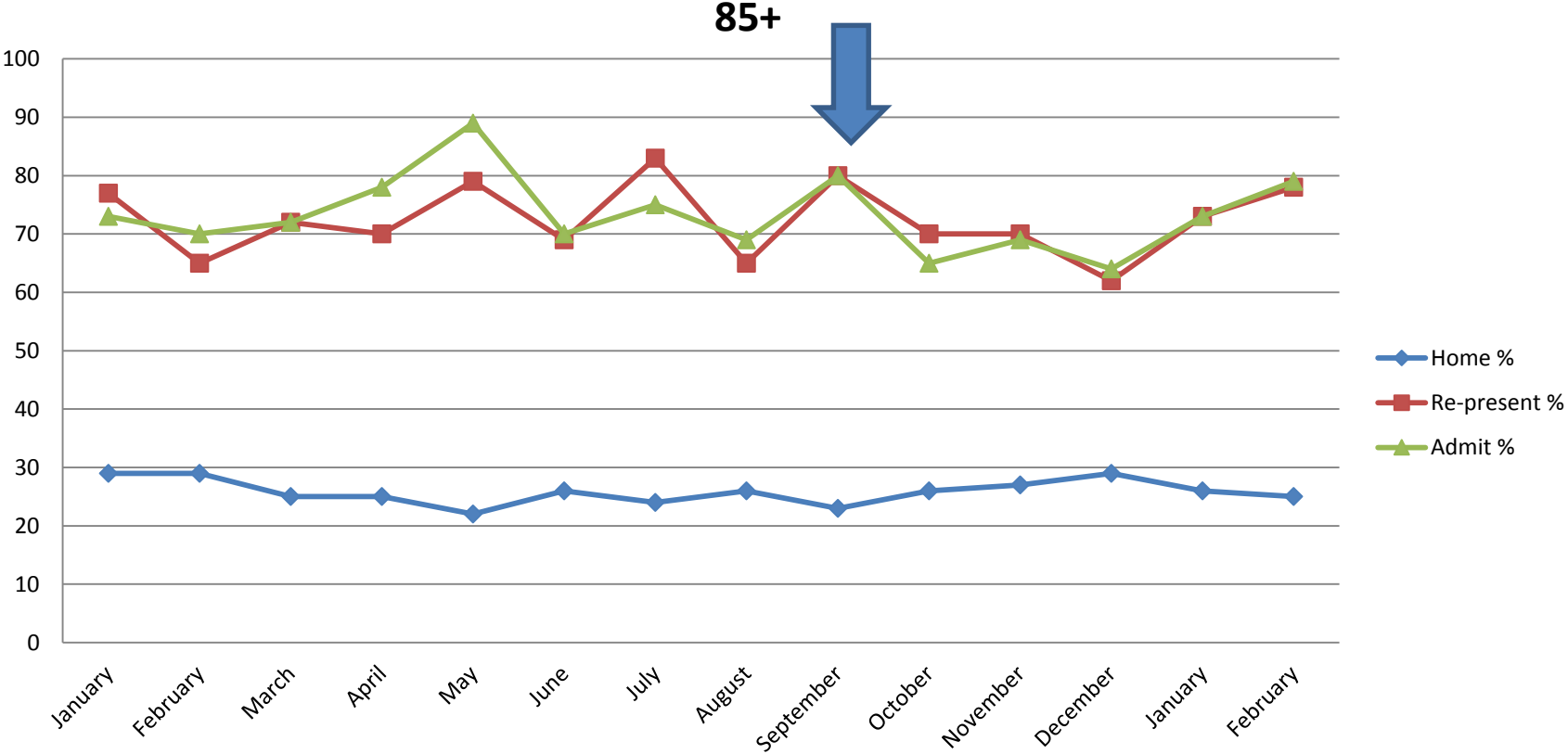
Representation by Intervention



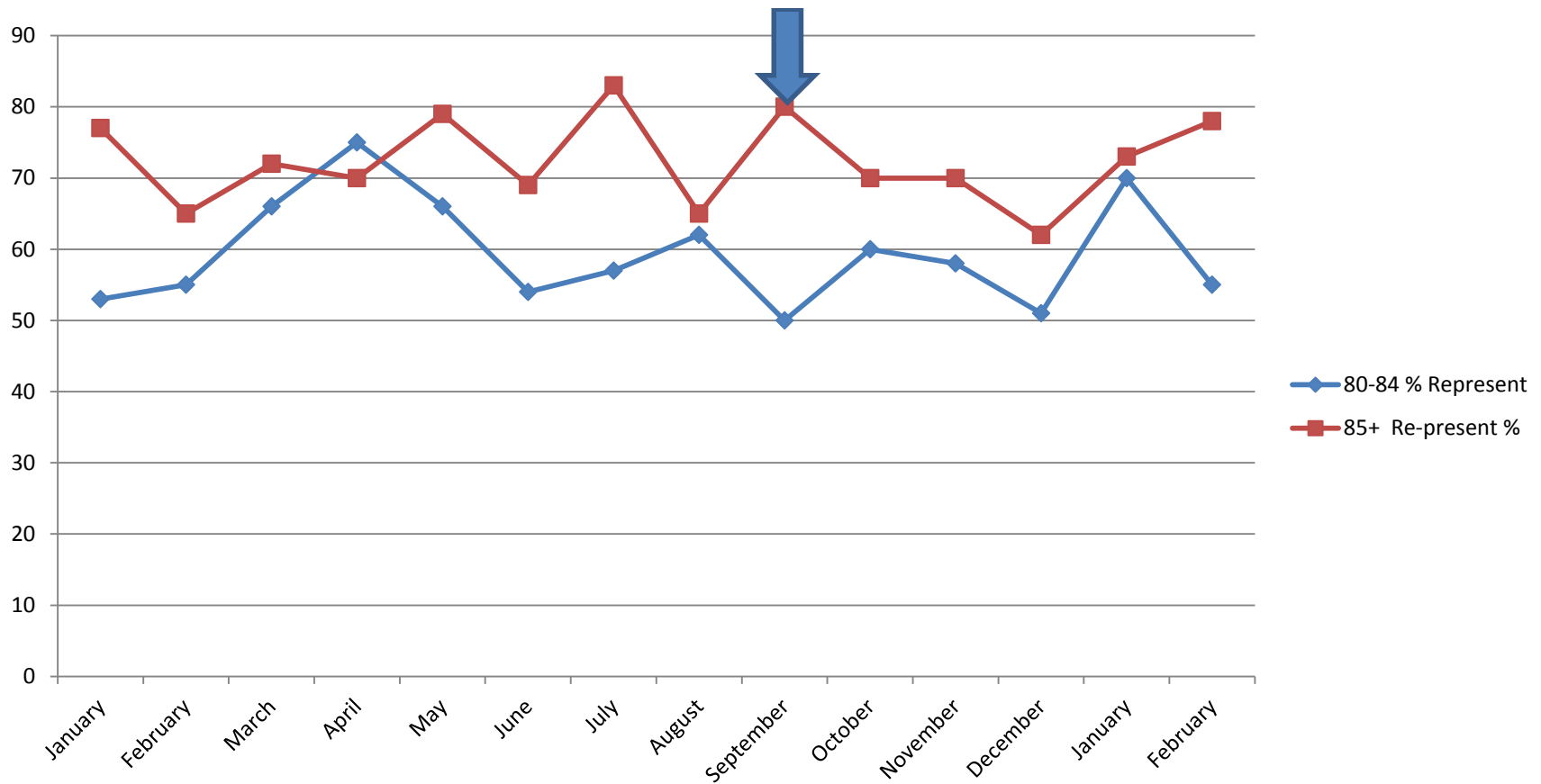
Numbers re-presenting to ED over last 14 months



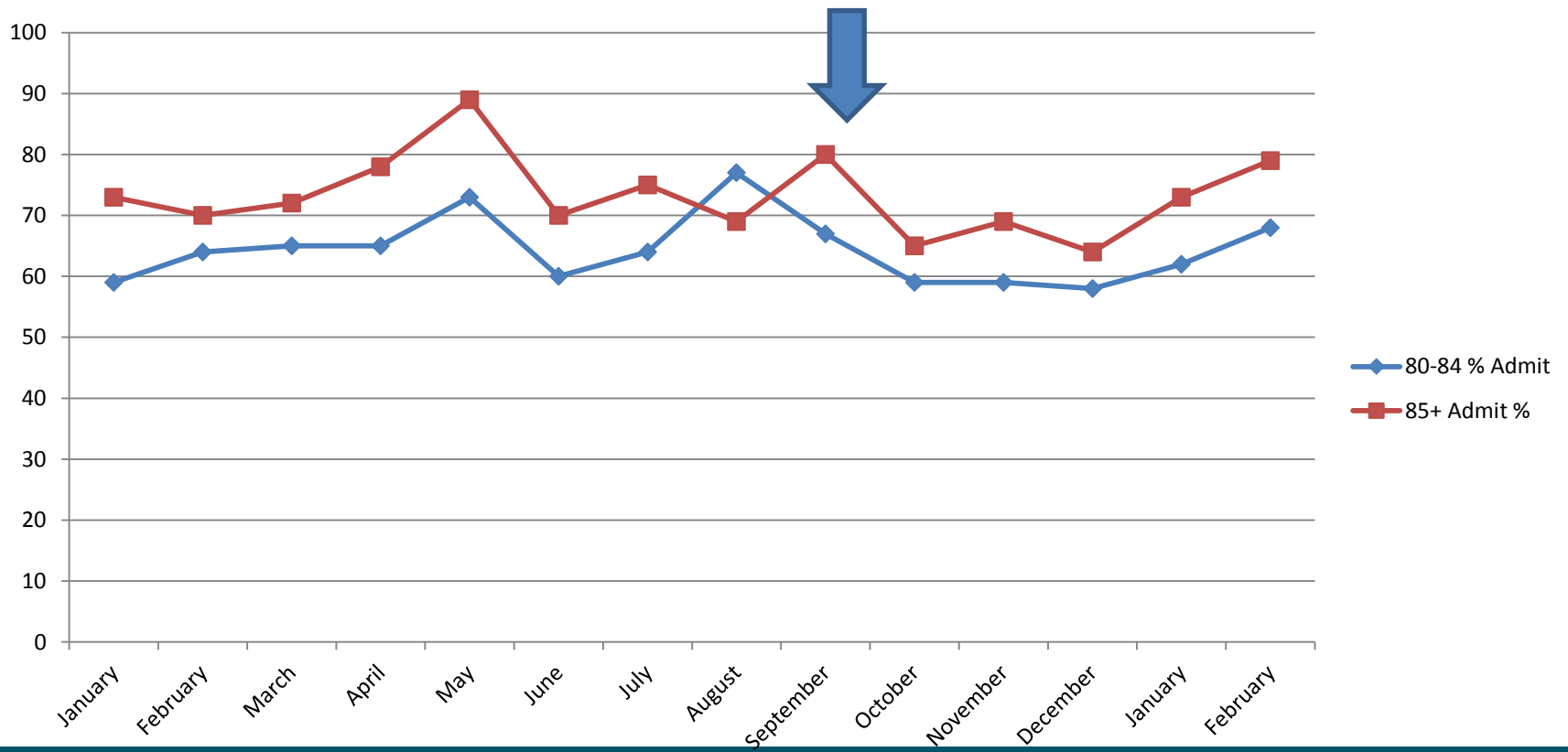
Percentages re-presenting to ED over last 14 months



Re-present Compare with 80-84y.o



Re-Admit Compare with 80-84 y.o



Lessons learnt..

- Early days ... Continue plan and evaluation
- At risk patients being identified appropriately
- Current arrangement of liaising with GPs appears to be working
- Potential to improve
 - Correct info on the system
 - Fridays/ public holidays ...

Moving ahead...

- Take a pause and re-assess
- Consider including patients 80-84 years
 - Time/ resource
- Feedback/ Suggestions