



Mandy Nearhos



IMPROVING LOCAL DECISIONS BY UTILISING MAPPING AND ANALYSIS TOOLS

What is data mapping?



Compatible with Ion Torrent & Illumina Desktop Sequencers
Analyze samples with SureCall
Easily customizable in SureDesign

Gene List

AKT1	AKT1
AKT2	AKT2
AKT3	AKT3
AKT4	AKT4
AKT5	AKT5
AKT6	AKT6
AKT7	AKT7
AKT8	AKT8
AKT9	AKT9
AKT10	AKT10
AKT11	AKT11
AKT12	AKT12
AKT13	AKT13
AKT14	AKT14
AKT15	AKT15
AKT16	AKT16
AKT17	AKT17
AKT18	AKT18
AKT19	AKT19
AKT20	AKT20
AKT21	AKT21
AKT22	AKT22
AKT23	AKT23
AKT24	AKT24
AKT25	AKT25
AKT26	AKT26
AKT27	AKT27
AKT28	AKT28
AKT29	AKT29
AKT30	AKT30
AKT31	AKT31
AKT32	AKT32
AKT33	AKT33
AKT34	AKT34
AKT35	AKT35
AKT36	AKT36
AKT37	AKT37
AKT38	AKT38
AKT39	AKT39
AKT40	AKT40
AKT41	AKT41
AKT42	AKT42
AKT43	AKT43
AKT44	AKT44
AKT45	AKT45
AKT46	AKT46
AKT47	AKT47
AKT48	AKT48
AKT49	AKT49
AKT50	AKT50
AKT51	AKT51
AKT52	AKT52
AKT53	AKT53
AKT54	AKT54
AKT55	AKT55
AKT56	AKT56
AKT57	AKT57
AKT58	AKT58
AKT59	AKT59
AKT60	AKT60
AKT61	AKT61
AKT62	AKT62
AKT63	AKT63
AKT64	AKT64
AKT65	AKT65
AKT66	AKT66
AKT67	AKT67
AKT68	AKT68
AKT69	AKT69
AKT70	AKT70
AKT71	AKT71
AKT72	AKT72
AKT73	AKT73
AKT74	AKT74
AKT75	AKT75
AKT76	AKT76
AKT77	AKT77
AKT78	AKT78
AKT79	AKT79
AKT80	AKT80
AKT81	AKT81
AKT82	AKT82
AKT83	AKT83
AKT84	AKT84
AKT85	AKT85
AKT86	AKT86
AKT87	AKT87
AKT88	AKT88
AKT89	AKT89
AKT90	AKT90
AKT91	AKT91
AKT92	AKT92
AKT93	AKT93
AKT94	AKT94
AKT95	AKT95
AKT96	AKT96
AKT97	AKT97
AKT98	AKT98
AKT99	AKT99
AKT100	AKT100

cast
2,127
colonrectum
12,250
Stomach
14,199
Prostate
4,041
Liver
15,490
Cervix
8,738
Oesophagus
7,713
Bladder
2,404
Other
6,451

WHY MAPPING IS USEFUL FOR DATA ANALYSIS

RELIABILITY AND EFFECTIVENESS

RESOURCES



On this page:

Publications

Data Cubes

Help for : Adobe PDF Excel File Zip File.

Publications

4364.0.55.001 - National Health Survey: First Results, 2014-15



4364.0.55.001 - National Health Survey 2014-15 Questionnaire



4364.0.55.001 - National Health Survey 2014-15 Prompt Cards



Data Cubes

Table 1: Summary health characteristics, 2001 to 2014-15 - Australia



Table 2: Summary health characteristics, 2014-15 - States and territories



Table 3: Long-term health conditions - Australia



Table 4: Long-term health conditions by population characteristics - Australia



Table 5: Long-term health conditions by health risk factors - Australia



Table 6: Health risk factors by population characteristics - Australia



Table 7: Psychological distress - Australia



Table 8: Body Mass Index, waist circumference, height and weight - Australia



Table 9: Smoking - Australia



Table 10: Alcohol consumption - Longer term and lifetime risk - Australia

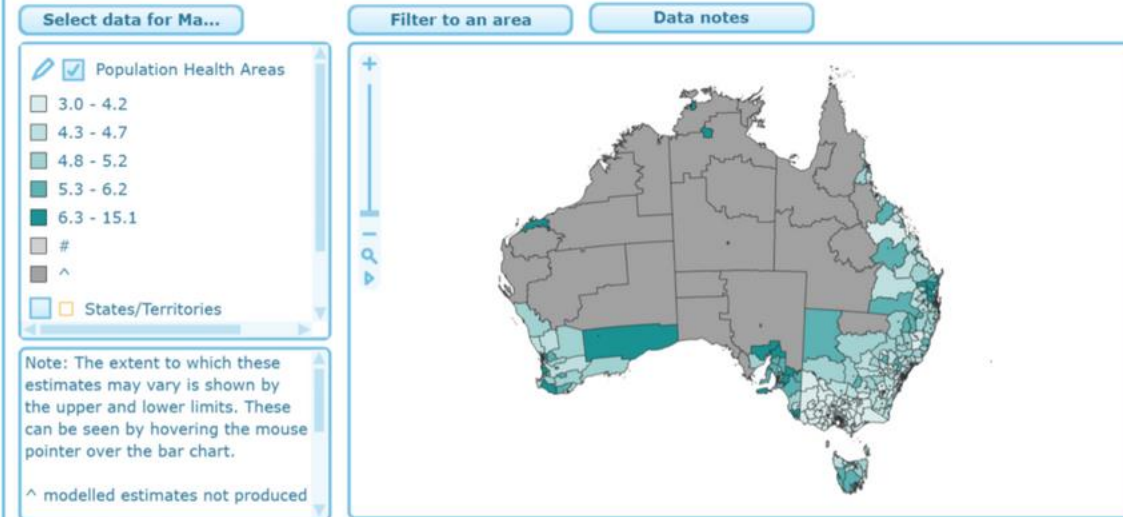


Table 11: Alcohol consumption - Short-term and single occasion risk - Australia

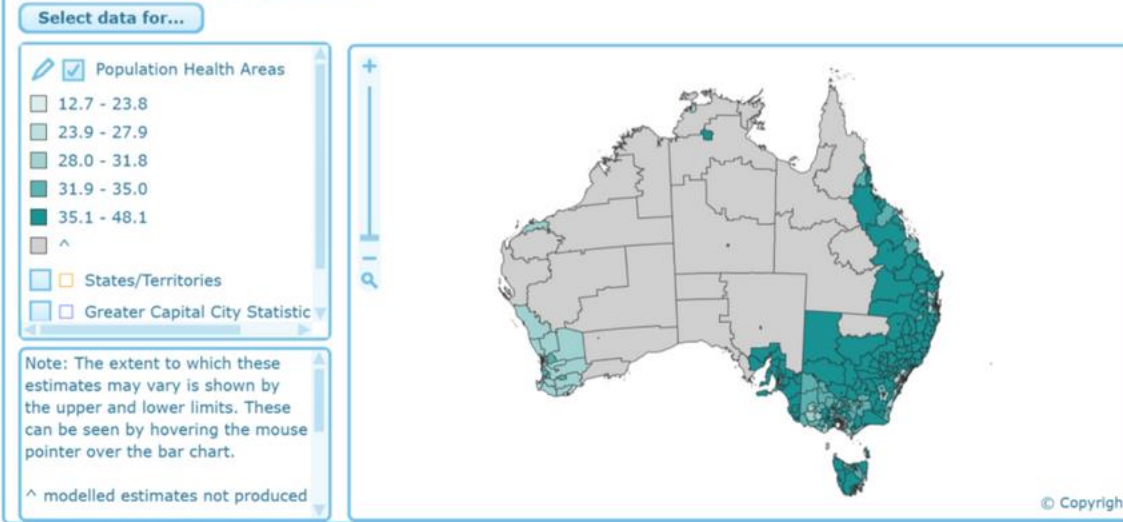


Social Health Atlas of Australia, Population Health Areas, Published 2017

Chronic disease (modelled estimates), 2011–12 - Age-standardised rate per 100 >> Diabetes mellitus, people aged 18 years and over



Health risk factors, adults (modelled estimates), 2014–15 - Age-standardised rate per 100 >> Obese persons, aged 18 years and over

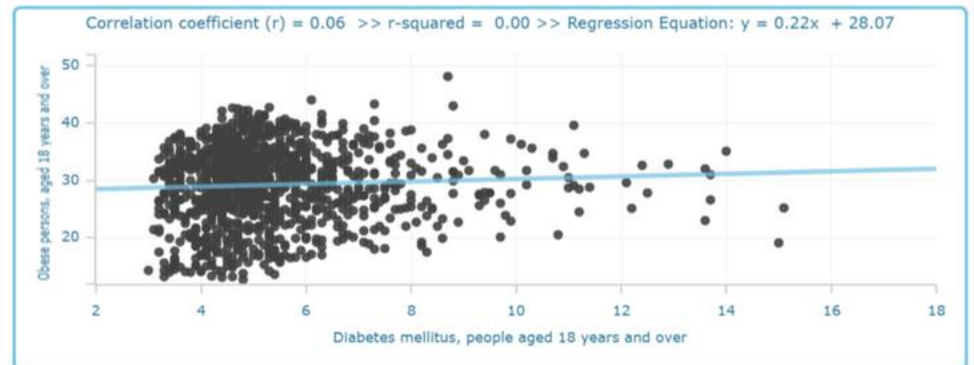


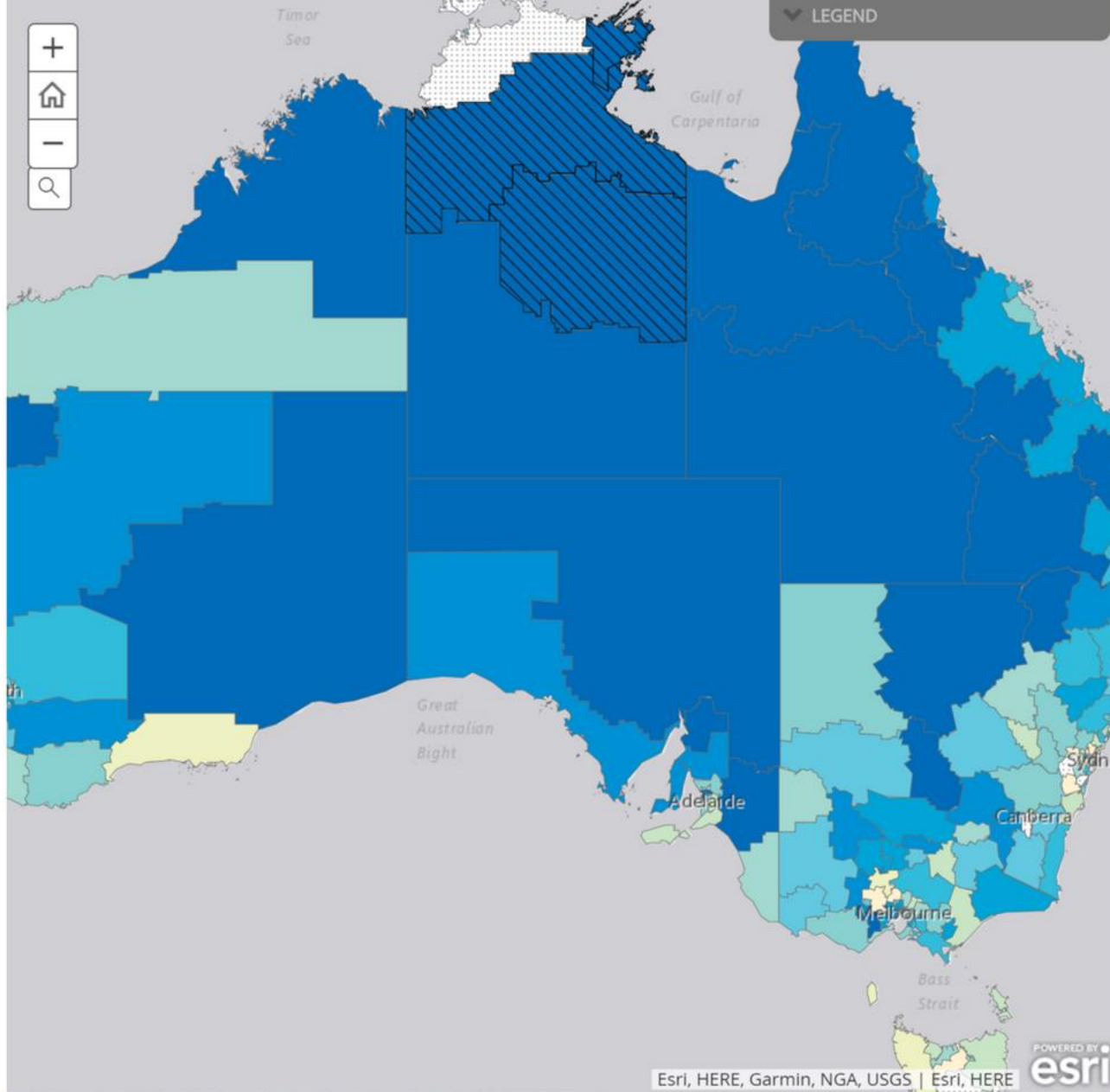
© Copyright



PHA list (based on SA2) Link to data Help

Name	Map 1	Map 2
ACT: ACT - East/ Hume/ Kowen/ Majura	5.7	31.8
ACT: Belconnen North	5.8	24.4
ACT: Belconnen South	5.3	20.6
ACT: Belconnen West	5.4	27.3
ACT: Chifley/ Lyons (ACT)/ O'Malley/ Phillip	5.2	22.1
ACT: Cotter - Namadgi	^	27.8
ACT: Curtin/ Garran/ Hughes	4.8	18.7
ACT: Dunlop/ Gooromon/ Macgregor (ACT)	5.5	32.0
ACT: Fadden/ Gowrie (ACT)/ Macarthur/ Monash	5.3	24.4
ACT: Farrer/ Isaacs/ Mawson/ Pearce/ Torrens	5.3	19.5
ACT: Flynn (ACT)/ Fraser/ Melba/ Spence	5.1	26.8
ACT: Greenway/ Oxley (ACT)/ Wanniasa	5.8	27.5
ACT: Gungahlin - North	5.0	26.2
ACT: Gungahlin - South	6.6	23.1
ACT: Inner North Canberra - North	5.3	20.3
ACT: Inner North Canberra - South	6.0	20.0
ACT: Inner South Canberra - North	4.6	15.4
ACT: Inner South Canberra - South	4.7	18.3
ACT: Kambah	4.3	26.0





[Download local area data](#)



1 Chronic disease and infection: Potentially preventable hospitalisations

1.5 Diabetes complications - map

Figure 1.27: Number of potentially preventable hospitalisations – diabetes complications per 100,000 people, age and sex standardised, by Statistical Area Level 3 (SA3), 2014–15: Australia map



Notes:

Rates are age and sex standardised to the Australian population in 2001.

Rates are based on the number of hospitalisations in public and private hospitals (numerator) and people in the geographic area (denominator).

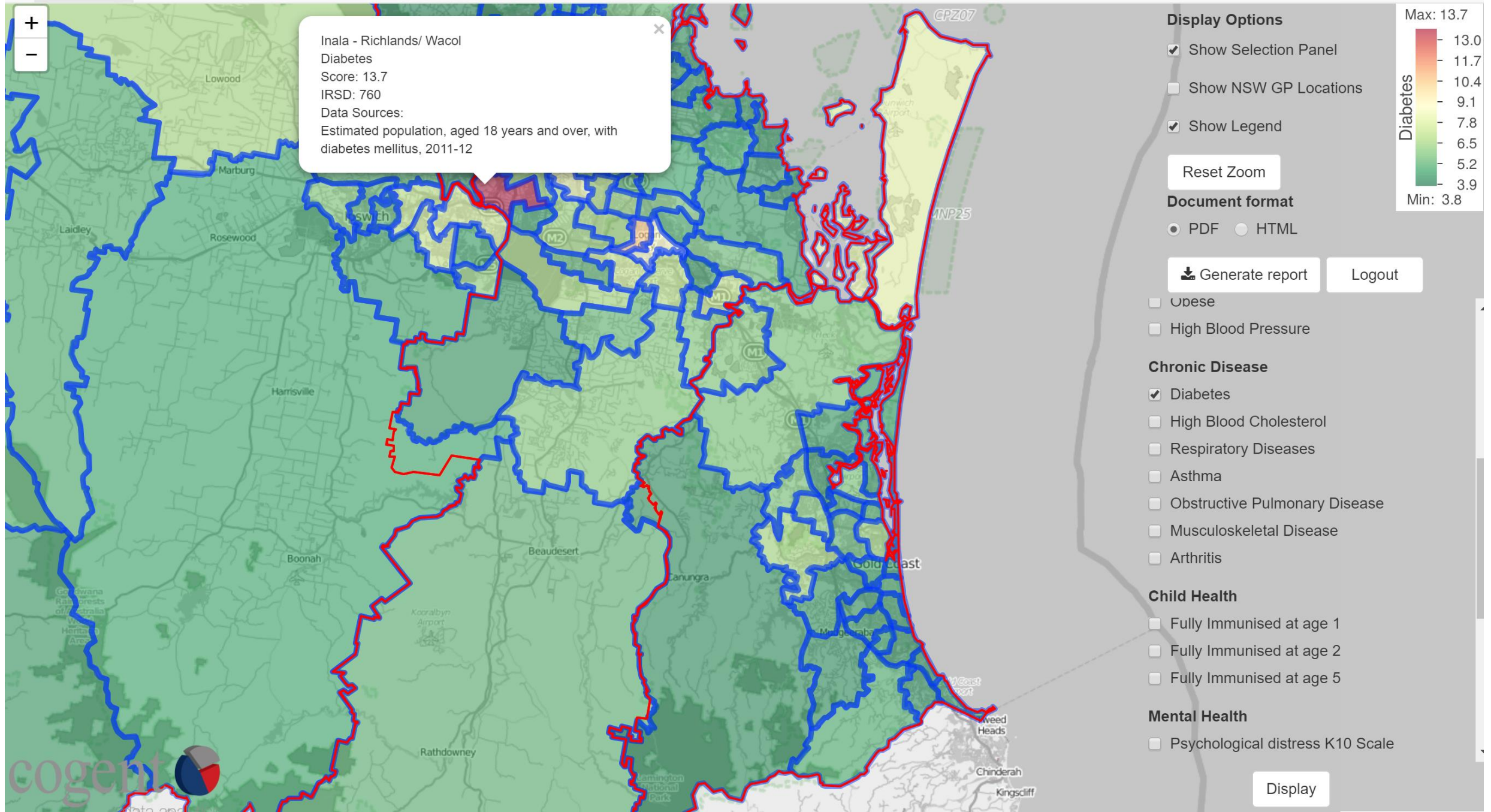
Analysis is based on the patient's area of usual residence, not the place of hospitalisation.

Hatching indicates a rate that is considered more volatile than other published rates and should be interpreted with caution.

For further detail about the methods used, please refer to the Technical Supplement.

Sources: AIHW analysis of National Hospital Morbidity Database 2014–15 and ABS Estimated Resident Population 30 June 2014.

HEALTH DATA ANALYSER DEMO



Geospatial Areas

Inala - Richlands/ Wacol

Forest Lake - Doolandella

Inala - Richlands/ Wacol

Boonah/ Rosewood

Esk/ Lake Manchester - England Creek/ Lowood

Lockyer Valley - East

Brassall/ Leichhardt - One Mile

Bundamba/ Riverview

Churchill - Yamanto/ Raceview/ Ripley

Area Demographics

Full Data

Selected Area:

Inala - Richlands/ Wacol

Selected Factors:

Diabetes

Score: 13.7

Other Details:

IRSD: 760

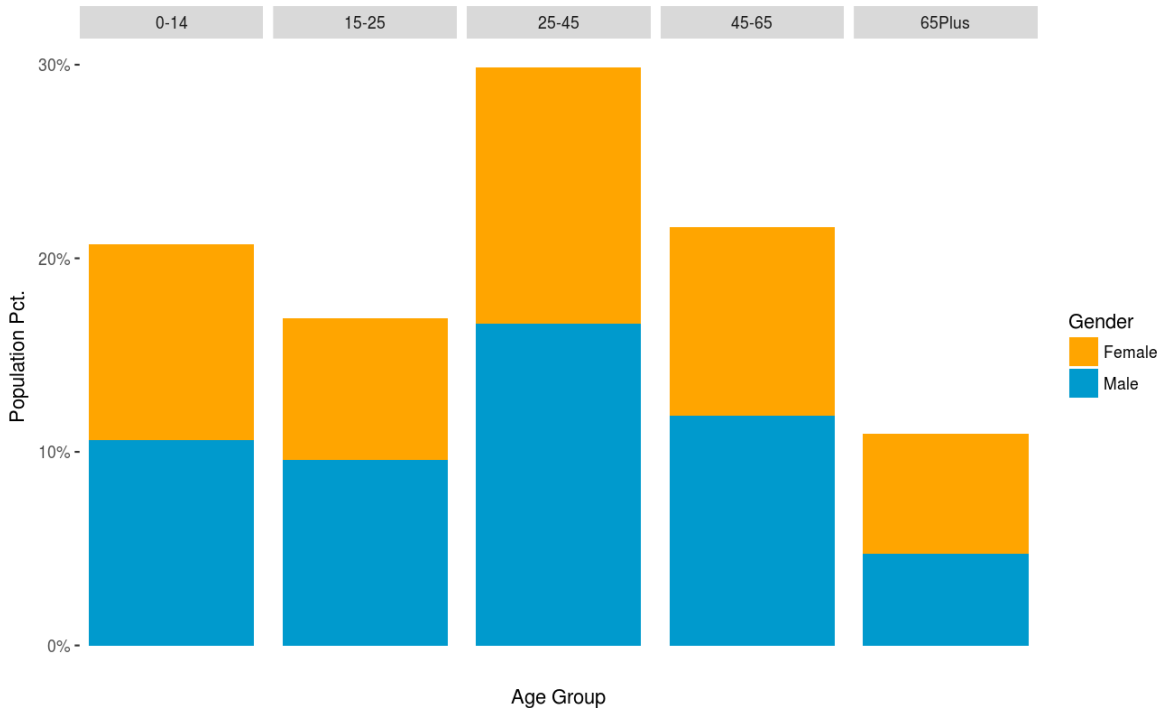
Unemployment: 19.8

Labour force participation: 42.5

Data Sources:

Diabetes, Estimated population, aged 18 years and over, with diabetes mellitus, 2011-12

Chart of age distribution for whole population:




Details

Geospatial Areas

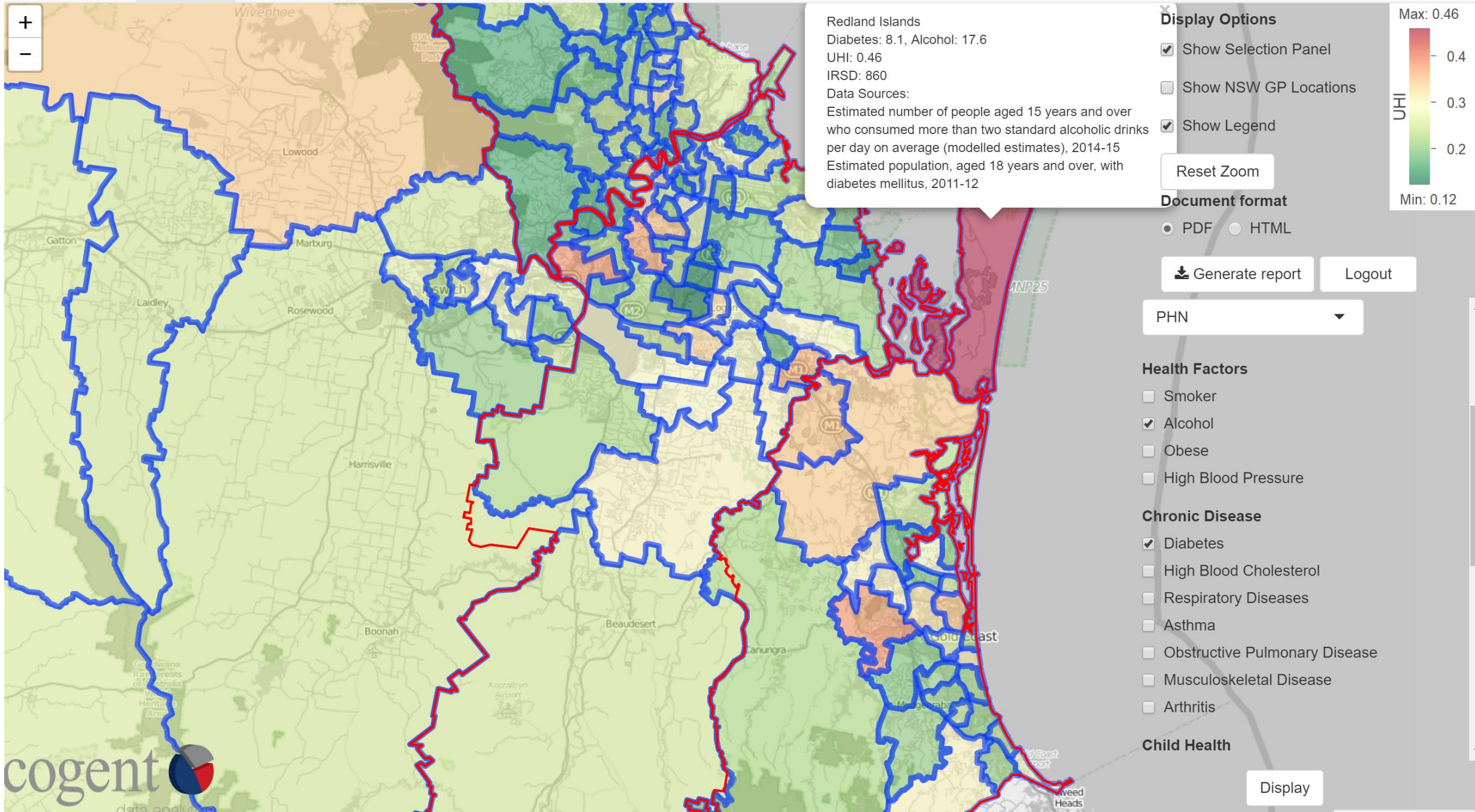
Inala - Richlands/ Wacol

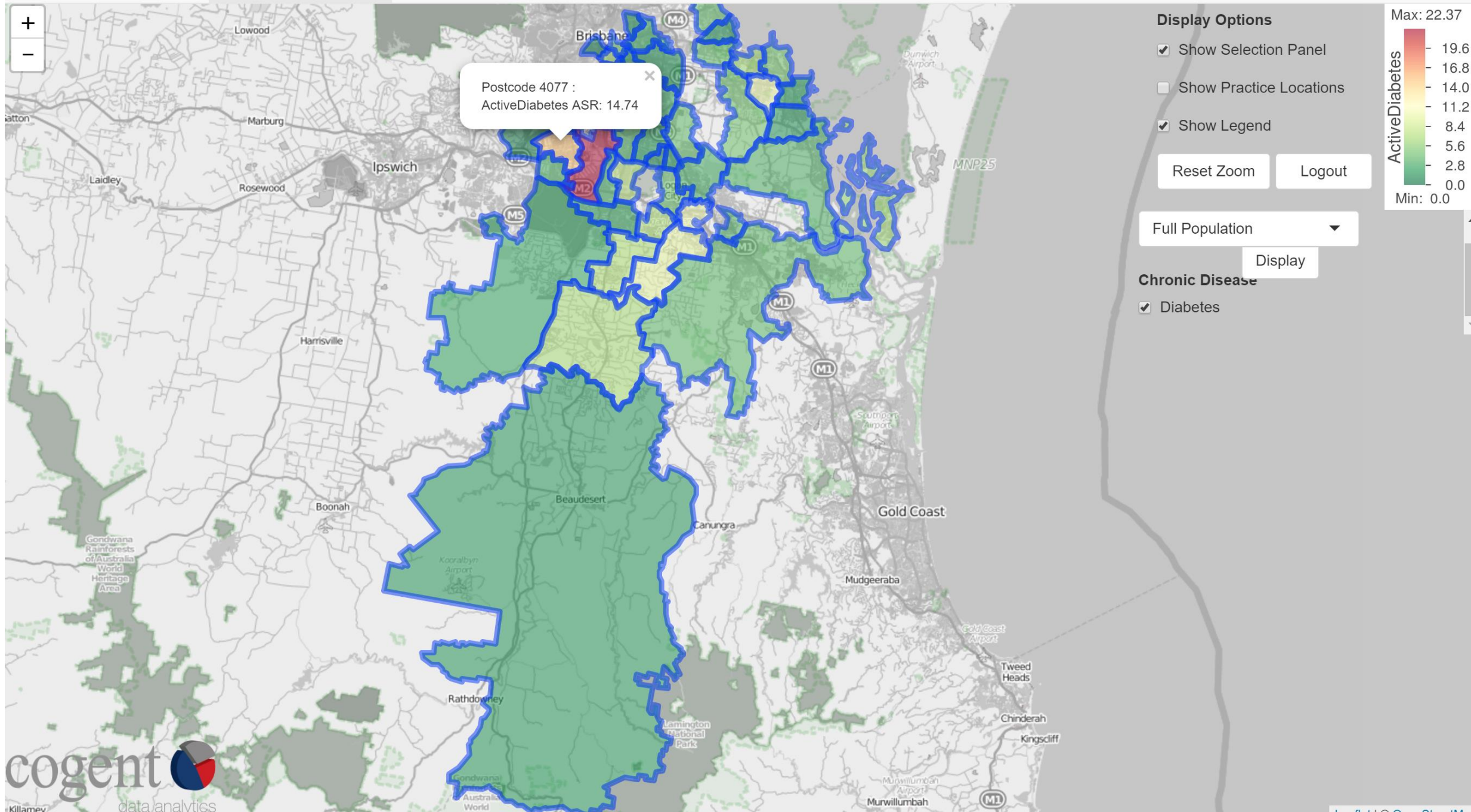
Area Demographics

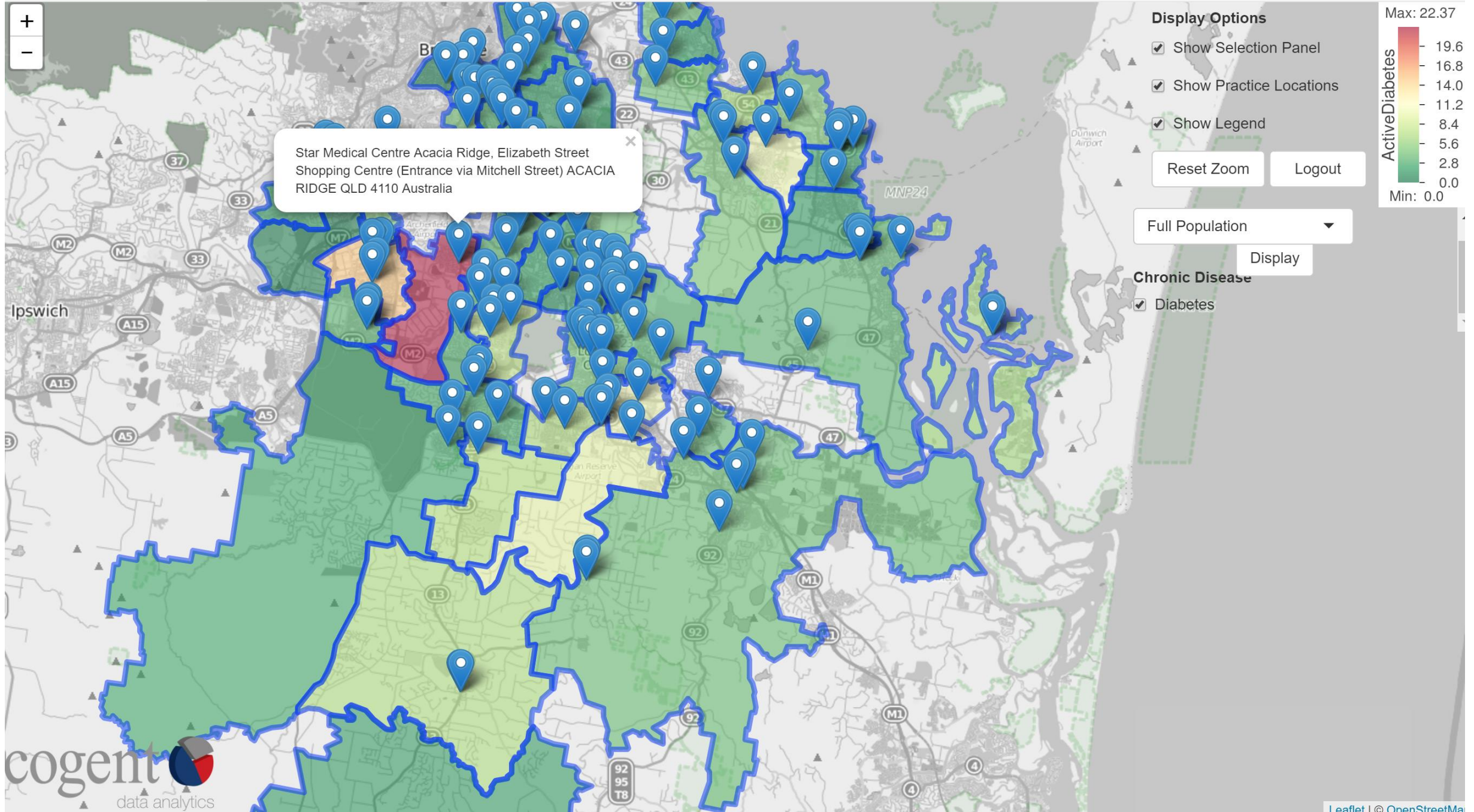
Full Data

 Extract Data

AREACode	Name	Diabetes
30000	Alexandra Hills/ Capalaba	4.80
30001	Belmont - Gumdale/ Birkdale/ Thorneside	4.40
30002	Wellington Point	4.40
30003	Cleveland/ Ormiston	4.30
30004	Redland Bay/ Sheldon - Mount Cotton	4.50
30005	Redland Islands	8.10
30006	Thornlands	4.20
30007	Victoria Point	4.20
30008	Brisbane Port - Lytton/ Wynnum	4.20
30009	Manly - Lota/ Manly West/ Wakerley	4.50
30010	Murarrie/ Tingalpa	6.40
30011	Wynnum West - Hemmant	4.40
30012	Bald Hills/ Carseldine	4.50
30013	Bridgeman Downs/ Everton Park/ McDowall	4.60
30014	Aspley/ Chermside West/ Geebung	4.70
30015	Chermside	4.80
30016	Kedron - Gordon Park/ Wavell Heights	5.20
30017	Stafford/ Stafford Heights	4.70







FEATURES



Shareable Information



Intuitive interface



Usable big data



Cloud based platform



Globally recognised
health index



Visual mapping

MAPPING LEVELS

- Primary Health Networks
- Population Health Areas
- Local Government Areas
- Statistical Area Levels



BENEFITS

- Efficient data analysis
- Evidence based decision making
- Use multiple indicators to improve program targeting
- Information to support strategic responses
- Support for business cases and competitive tendering



AVAILABLE TO ASSIST

WWW.COAGENTDATAANALYTICS.COM.AU