



**nrhsn<sup>TM</sup>**

**national rural health  
student network**

*the future of rural health*

# nrhsn rural health clubs

1. **ARMS**  
Australian National University, ACT
2. **AURHA**  
Adelaide University, SA
3. **BREAATHHE**  
University of Newcastle, NSW
4. **BUSHFIRE**  
Bond University, QLD
5. **CARAH**  
Charles Darwin University, NT  
in assoc with Flinders University, SA
6. **CRANC**  
University of Canberra, ACT
7. **FURHS**  
Flinders University, SA
8. **HOPE4HEALTH**  
Griffith University, QLD
9. **KRASH**  
Notre Dame University, Broome, WA
10. **LARHC**  
La Trobe University, Bendigo, VIC
11. **MARHS**  
Charles Sturt University, Albury, NSW  
including La Trobe University  
Wodonga, VIC
12. **MIRAGE**  
University of Sydney, NSW

13. **NERCHA**  
University of New England, NSW
14. **NOMAD**  
Deakin University, VIC
15. **OUTLOOK**  
University of Melbourne, VIC
16. **RAHMS**  
University of New South Wales, NSW
17. **RHINO**  
James Cook University, QLD
18. **RHUWS**  
University of Western Sydney, NSW
19. **ROUNDS**  
Notre Dame University, Sydney, NSW
20. **ROUSTAH**  
University of South Australia, SA
21. **RUSTICA**  
University of Tasmania, TAS
22. **SHARP**  
University of Wollongong, NSW
23. **SPINRPHEX**  
Combined Universities  
of Western Australia, WA
24. **SIARRH**  
Charles Darwin University, NT  
including Flinders University, NT




25. **TROHIQ**  
University of Queensland, QLD
26. **WAALHIIBE**  
Combined Universities of Western Australia, WA
27. **WARRIAHS**  
Charles Sturt University, Wagga Wagga, NSW
28. **WILDFIRE**  
Monash University, VIC

## 2016 Executive Committee





# Rural Health Club events



the future of rural health

The National Rural Health Student Network is a multidisciplinary health network comprising of 28 Rural Health Clubs (RHCs) located at Universities around Australia, in every State and Territory. [Read more](#)

[Join the nrhsn](#) [Join as an Alumni](#)

### Latest News

- 21 APR** Apply Now - Aboriginal and Torres Strait Islander Health Student Bursary Award
- 19 APR** Check out the April edition of the Cooeel eNewsletter
- 18 APR** CRANaplus Grants and Funding available now
- 13 APR** Keeping Australia Alive - ABC documentary capturing Australian health system


[View all news](#)


### Events

- 27 APR** Mildura Year 2 Rural Week
- 28 APR** Rustica Indigenous Community Festival
- 28 APR** Careers Day Out
- 28 APR** Shepparton Rural Careers Fair

[View all events](#)

Find us on Facebook



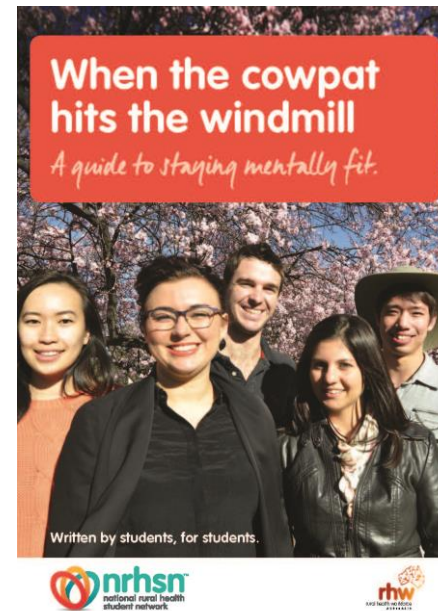
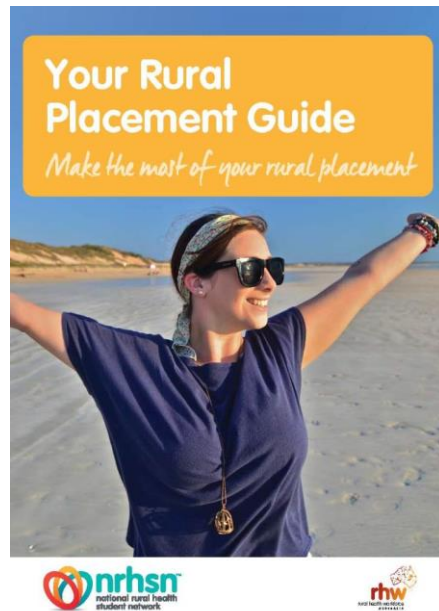


"I can make a difference in a rural community." - Morgan, dental student

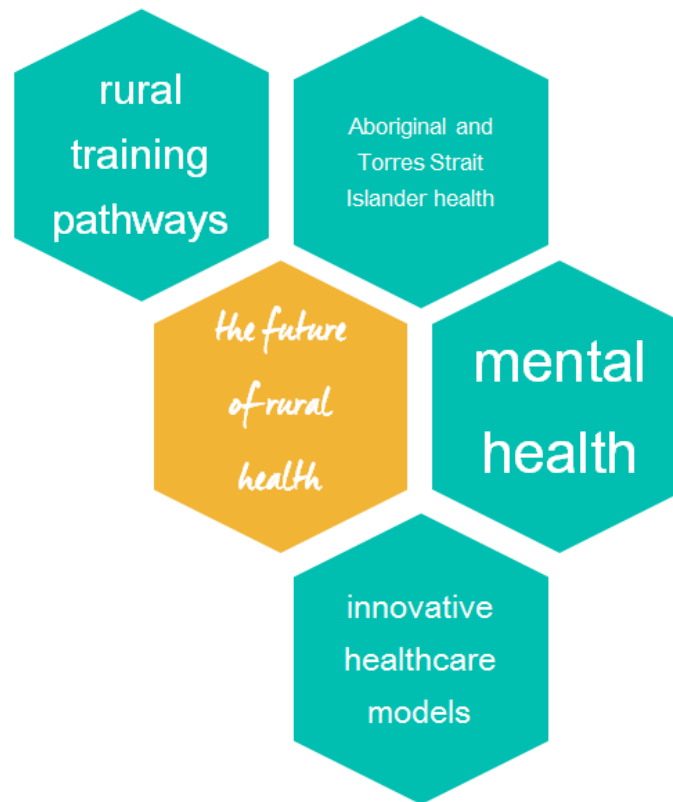


## Resources

- Mental Health Guide
- Rural Placements Guide



## 2016 Business Plan Priorities



## 2016 Business Plan Activities





## 2016 Business Plan Outcomes





## 21<sup>st</sup> Birthday

- National celebration
- Rural health innovation ambassadors
- Local Rural Health Club celebratory events

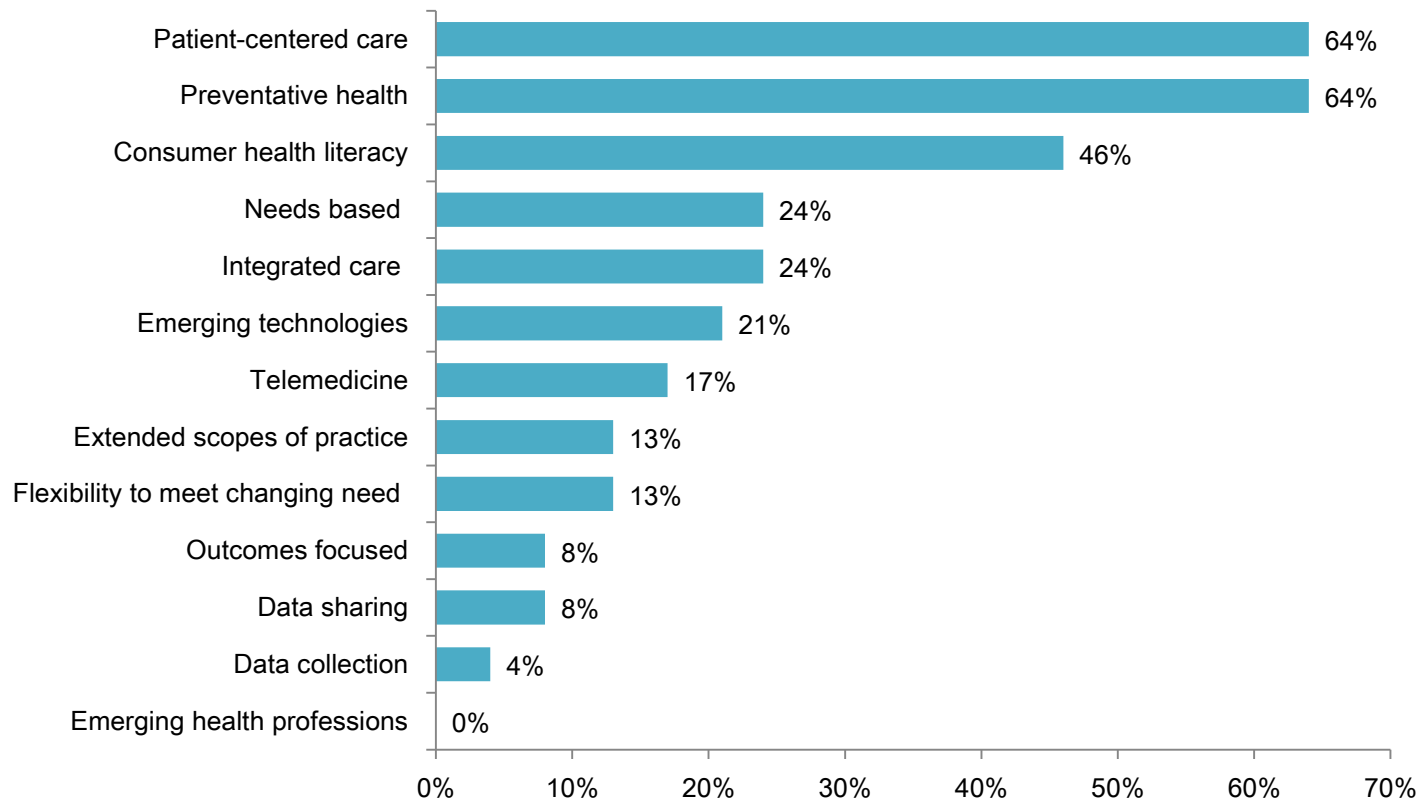


# Recommendations – what the future rural health workforce want

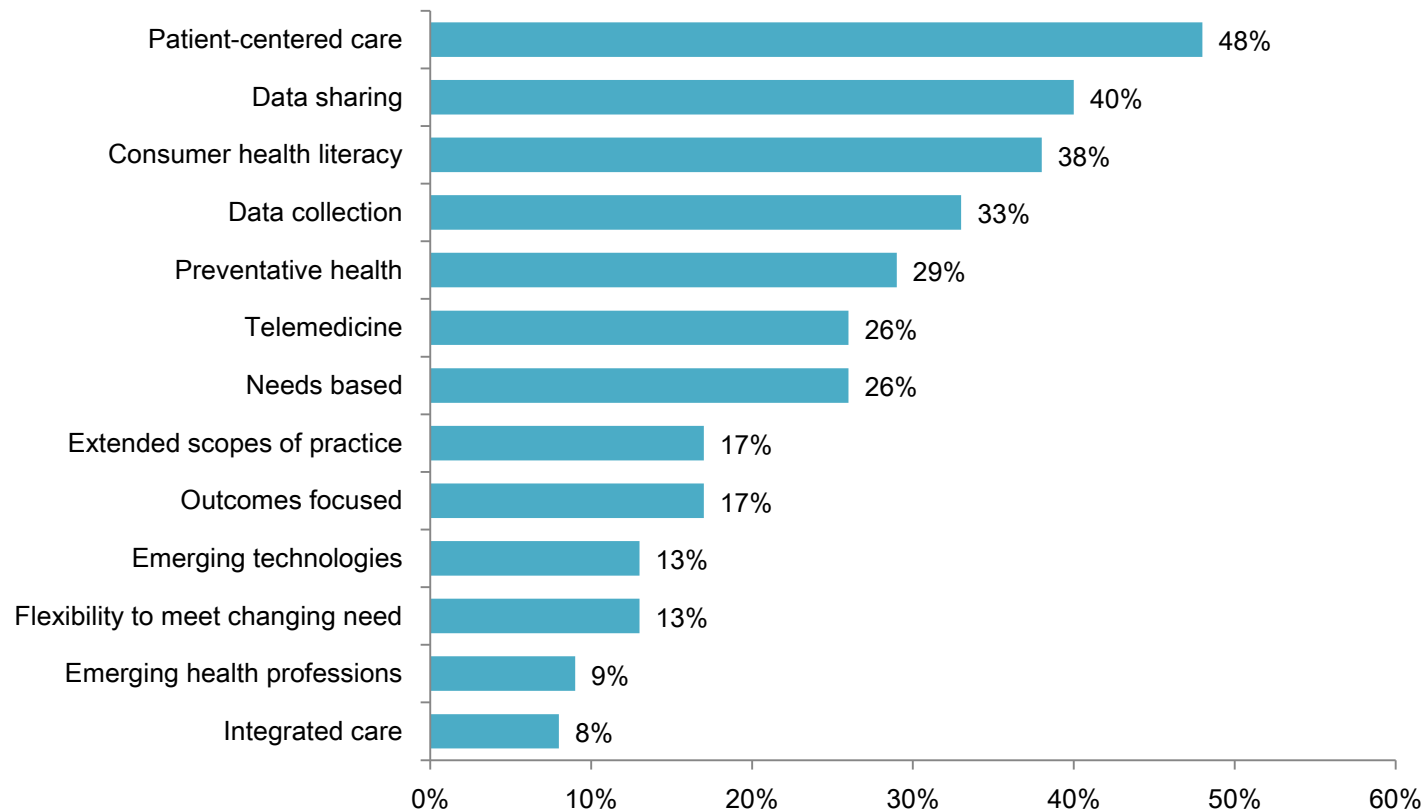
- Consumer health literacy
- Emerging technologies
- Data collection
- Data sharing
- Telemedicine
- Integrated care
- Extended scopes of practice
- Emerging health professions
- Patient-centered care
- Outcomes focused
- Flexibility to meet changing need
- Needs based
- Preventative health



## Recommendations – potential positive impact

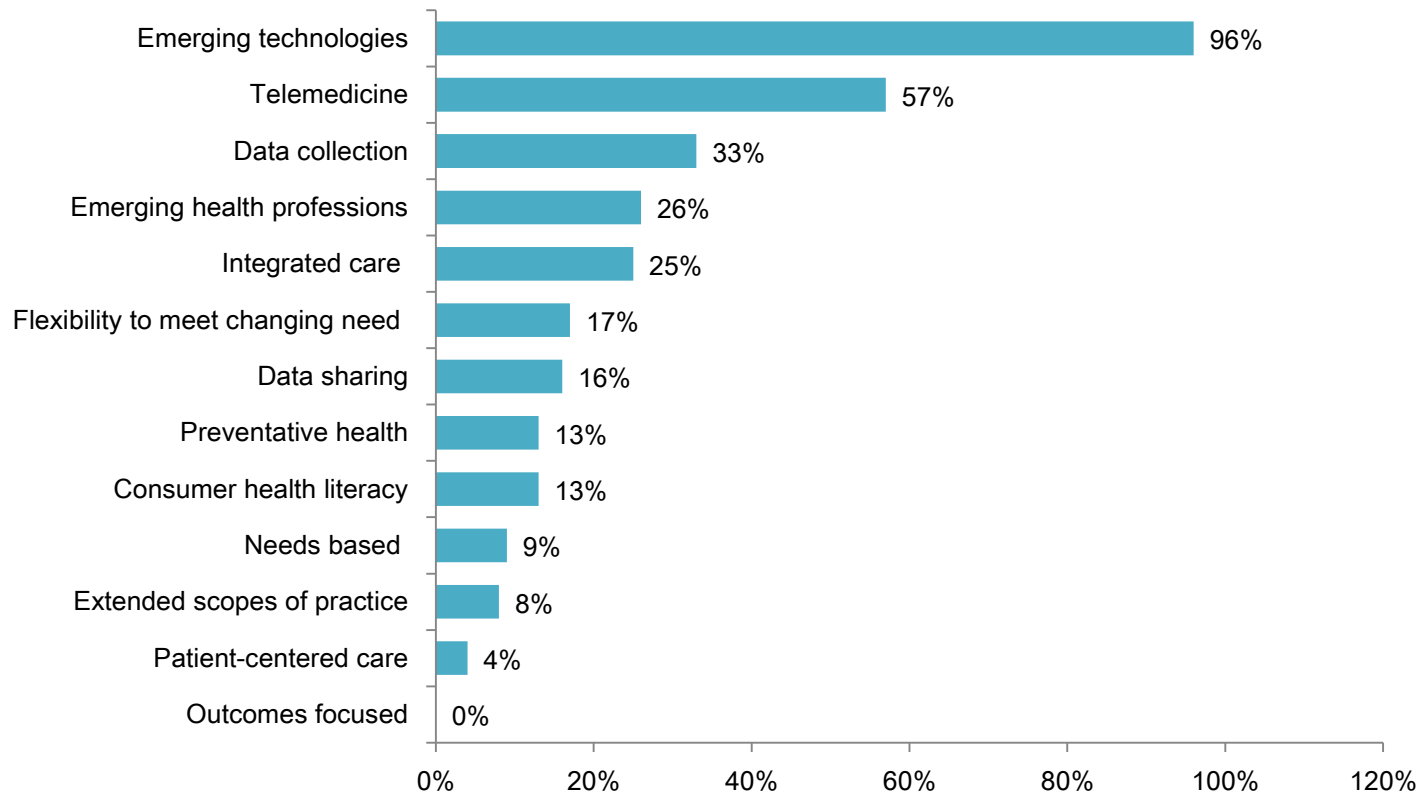


## Recommendations – easiest to implement





## Recommendations – most innovative



## Ambassadors

- Dr Jennifer Tang
- Dr Jarrel Seah
- Health technology creators



## Ambassadors

- Tabitha Jones
- Integrated healthcare



## Ambassadors

- Dr Angus Turner
- Preventative eye healthcare





## Connect with the future rural health workforce

- Cross-promotion
- Involvement or support of relevant activities
- Consultation on rural health issues
- Rural student placement support
- Connecting students into the workforce



## Contact Details

c/- Rural Health Workforce Australia  
Suite 2, Level 5  
10 Queens Rd  
Melbourne Vic 3004

Ph: 03 9860 4700  
[executivecommittee@nrhsn.org.au](mailto:executivecommittee@nrhsn.org.au)  
[www.nrhsn.org.au](http://www.nrhsn.org.au)