

ahha

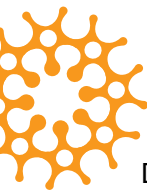
australian healthcare &
hospitals association

your voice in public healthcare



Membership

institutional | personal | associate | associate gold | student



Would you like to make a difference to health policy?

Do you want to participate in health policy development at the cutting edge? Would you like access to a network of healthcare colleagues to share innovative ideas and discuss ways forward? Do you need support on particular issues or up-to-date information?

AHHA will meet your needs

For over 60 years, AHHA has upheld the voice of public healthcare.

Our core business is to represent and support Australia's public healthcare sector. Our mission is to develop excellent policies to promote reform.

The Association supports your access to networks of colleagues. It provides professional forums to stimulate critical thinking. It facilitates a collective voice across Australia and develops innovative ideas for reform.

AHHA values your knowledge and experience

Whether you are a student, clinician, academic, policy-maker or administrator, AHHA values your skills and expertise.

AHHA reflects your views and gives them a voice. Your input will both help shape AHHA's policy positions and our highly influential advocacy program.

Our focus is on improving safety and quality for patients and consumers in all healthcare settings. To do this we are working to achieve better service integration; enhanced information management systems; efficient financing models; targeted performance measures and benchmarking; and a sustainable and flexible workforce.

Your knowledge and expertise in these areas are critical and you can have direct input to our policy development.



Join AHHA and influence the future of your industry



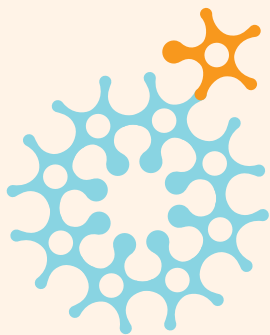
Membership gives you opportunities to shape policy development, to influence advocacy and to learn and network.

- ✧ Policy Think Tanks – linking you with colleagues in all states and territories;
- ✧ Events and conferences – providing a forum for stimulating debate and action planning;
- ✧ Delegations – giving you the chance to be part of a team directly influencing decisions before Ministers, inquiries or reviews;
- ✧ Tailored representation – giving you a voice when specific government policy or legislation impacts on your work;
- ✧ Support – assistance to develop a particular activity or program;
- ✧ Recognition – for innovative healthcare delivery models.

In addition to AHHA's policy development and advocacy programs, you have easy access to a wide range of information and services.

	Student	Personal	Associate	Associate Gold	Institutional
Australian Health Review (AHR) Australia's foremost peer reviewed journal on health management and policy	✓	✓	✓	✓	✓
Healthcare Brief (HCB) Members only newsletter full of industry information and current issues	✓	✓	✓	✓	✓
e-Healthcare Brief Popular electronic weekly newsletter reporting health news, events and research	✓	✓	✓	✓	✓
Think Tanks, Forums and Congress	Up to 30% Discount				
Just Health Events AHHA and Industry Events	10% off Endorsed Events				
Just Health News AHHA and Industry News	✓	✓	✓	✓	✓
Just Health Jobs On-line job posting service	30% Discount	30% Discount	30% Discount	30% Discount	Unlimited free job postings
AHHA website Logon and password to access member only services	✓	✓	✓	✓	✓
Just Health Business Directory	✓	✓	Free listing Logo + 500 words	Free listing Logo + 500 words + 5 pg attachment	Free listing Logo + 500 words + 5 pg attachment

* All members receive free postings on Just Health Events and Just Health News



Why join the Australian Healthcare & Hospitals Association?

Contribute to the voice of public healthcare

As a member, you and your organisation play a role in reforming the public healthcare sector by contributing directly to AHHA's leading edge policies. We develop policies that reflect your views. Join our think tanks or participate in our national seminars or conferences. Our voice is authoritative and influential. It is heard via our high-level advocacy program and extensive media exposure.

Network and learn

As a member, you have access to regular professional development activities and to networking opportunities with colleagues across Australia through our stimulating and creative forums. You also receive the *Australian Health Review*, Australia's foremost journal on health management and policy (paper copy or on-line), up-to-the-minute news bulletins and other professional information.

Receive support and representation

The AHHA will support you and your organisation to provide high quality, safe care. As a member, you will be represented, either for a specific issue or by contributing to our submissions to government bodies, inquiries and reviews.

Contact us today to become part of a dynamic association focussed on healthcare solutions that benefit all Australians. Contribute to the authoritative voice you need in healthcare. Be connected. Be heard.

OUR PRIORITIES:

Building stronger systems

Governance

Health outcomes

Service integration

Workforce

Safety and quality

Access for all

For more information:

Website: www.aushealthcare.com.au
Email: admin@aushealthcare.com.au
Tel: 02 6162 0780
Fax: 02 6162 0779
Address: GPO Box 578 Canberra ACT 2601
ABN: 49 008 528 470





ahha

australian healthcare &
hospitals association

Membership Fees 2008/09*

Student	Australian	\$ 181.00
	Overseas	\$ 244.00
Personal	Australian	\$ 244.00
	Overseas	\$ 334.00
Associate	Australian	\$ 680.00
	Overseas	\$ 929.00
Associate Gold	Australian	\$ 974.00
	Overseas	\$ 1,331.00

* Fee includes GST - valid from July 1, 2008 to June 29, 2009

See over for Institutional Membership Fees

For more information:

Website: www.aushealthcare.com.au
Email: admin@aushealthcare.com.au
Tel: 02 6162 0780
Fax: 02 6162 0779
Address: GPO Box 578 Canberra ACT 2601
ABN: 49 008 528 470



Membership

Institutional Membership Fees 2008/09*

GOP (Gross Operating Expenditure)		Fee
000,000	000,000	
\$0	\$5	\$ 2,701
\$5	\$10	\$ 4,630
\$10	\$20	\$ 6,560
\$20	\$35	\$ 8,489
\$35	\$55	\$ 10,418
\$55	\$80	\$ 12,347
\$80	\$110	\$ 14,277
\$110	\$150	\$ 16,206
\$150	\$200	\$ 18,135
\$200	\$250	\$ 20,064
\$250	\$300	\$ 21,994
\$300	\$350	\$ 23,923
\$350	\$400	\$ 25,852
\$400	\$450	\$ 27,782
\$450	\$500	\$ 29,711
\$500	\$600	\$ 31,640
\$600	\$700	\$ 33,569
\$700	\$800	\$ 35,499
\$800	\$900	\$ 37,428
\$900	\$1,000	\$ 39,357
\$1,000	\$1,100	\$ 41,286
\$1,100	\$1,200	\$ 43,216
\$1,200	\$1,300	\$ 45,145
\$1,300	\$1,400	\$ 47,074
\$1,400	\$1,500	\$ 49,004
\$1,500	\$1,700	\$ 50,933
\$1,700	\$1,900	\$ 52,862
\$1,900	\$2,100	\$ 54,791
\$2,100	over	\$ 56,721

* Fee includes GST - valid from July 1, 2008 to June 29, 2009



Australian Healthcare & Hospitals Association
ABN 49 008 528 470
GPO Box 578 | Canberra ACT 2601
P: +61 2 6162 0780 | F: +61 2 6162 0779
E: admin@aushealthcare.com.au | W: www.aushealthcare.com.au

2008-2009 Type of membership

	Australian	Overseas
Student*	<input type="checkbox"/> \$181	<input type="checkbox"/> \$244
Personal	<input type="checkbox"/> \$244	<input type="checkbox"/> \$334
Associate	<input type="checkbox"/> \$680	<input type="checkbox"/> \$929
Associate Gold	<input type="checkbox"/> \$974	<input type="checkbox"/> \$1,331

Institutional (see 2008/09 fee scale) \$ _____

*Documentation required to verify status as a student All prices for Australian membership include GST and are in Australian dollars

Name

Position

Organisation

Postal Address

Suburb State Postcode

Phone Fax

E-mail

Payment Details

Amount in AUD\$ to be paid by cheque or credit card. Cheques should be made payable to Australian Healthcare & Hospitals Association tion:

Credit Card Payments

- American Express Diners
 Mastercard Visa

AMOUNT

Cardholder Name

Card Number

Expiry Validation Number

Authorised Signature